

2025 “SIRS” RESERVE STUDY

FOR

Promenade at Boca Pointe Condo. Assoc. No. 3, Inc.
7201 / 7209 / 7217 / 7225 / 7233 Promenade Dr., Boca Raton, FL 33433

Budget Year: February 1st, 2026

Revised: July 28th, 2025



TABLE OF CONTENTS

1. Narrative Section (A pages)

- Introduction
- Purpose of Reserves
- Navigating & Understanding this Report
- General Analyst Recommendation
- Special Notes & Financial Notes

2. Reserve Summary (B1 page)

- includes the total(s) and grand total(s) for all main reserve categories
- provides the total Reserve Replacement Cost, Normal Annual Contribution, Current Reserve Requirement, Association/Coop's Current Reserve Balance, and Next Budget Year's Fully Funding Reserve Contribution

3. Reserve Forecast (B2 & B3 & B4 pages)

- provides the association/Coop's current year's reserve contribution and the future reserve fully funding annual contribution for the next 25-30 years

4. Reserve Analysis (C pages)

- this section includes the detailed field and desktop work completed by the reserve analyst/specialist for each reserve category
- provides an in-depth, line-by-line reserve components/assets for each reserve category
- note: each reserve component item will have the quantity of units used, unit cost, replacement cost, normal life, remaining life, normal annual contribution and the current reserve requirement for each specific component item

5. Reserve Funding Analysis (D pages)

- this section includes the cash flow analysis of the normal annual reserve contribution to be collected each year against the annual reserve expenditures incurred on a yearly basis for the next 20 years
- the analysis will show your estimated fund balance for the next 25 years based on the cash flow method of funding and how we have added any reserve fund deficit amount(s) to your normal annual contribution that might be created over the next 25 years
- this section will show why and when a reserve fund deficit amount is created (deficit amounts that are added will be shown in blue text)
- Note: the new yearly contribution calculated/stated in this section is also provided on the B2-B4 summary page of this report

6. Photos

7. Association/Cooperative's most Recent Financials

8. Definition for Reserve Names & Contractor's List

9. Florida Statutes



STRUCTURAL INTEGRITY RESERVE STUDY (SIRS) REPORT

Promenade at Boca Pointe Condominium Association No. 3, Inc.

7201 / 7209 / 7217 / 7225 / 7233 Promenade Drive, Boca Raton, FL 33433

Date of Site Visit: June 4th, 2025

Budget Year: February 1st, 2026

Revised: July 28th, 2025



PURPOSE OF THE RESERVE STUDY:

To provide the basis for the necessary funding to repair and replace those reserve components/assets which are statutorily required by the State of Florida which are the Association's responsibility.

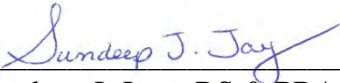
SCOPE OF THE RESERVE STUDY:

Identify and examine specific components for all the reserve category needs and use the “**Cash Flow**” method with “**Pooled Reserves**” for future reserve financial analysis. This report, coupled with the Traditional reserve study is a “full reserve study which includes a site-visit/inspection”. This association has 3 condominium buildings connected by 2 utility rooms with 78 residential units. Included in this Structural Integrity Reserve Study are the following categories: Roofing, Painting/Waterproofing, Structure/Restoration, Fire Protection Systems, Plumbing, Electrical Systems, and Windows/Doors. The Study will quantify the individual components in each reserve category by actual field measurements and a visual review of asset items where possible. Establish current cost estimates for replacement using Marshall & Swift Valuation Service, Means Building Construction Cost Data, Trade Service Electrical Price Guide, J. R. Frazer collected proprietary costs, and on a case-by-case basis an engineer's visual site visit estimates, and local contractors. Identify the useful life expectancy for each component. Estimate each component's remaining useful life through non-destructive methods. Calculate the normal annual contribution over the useful life expectancy. Establish the current Fully Funded Balance (Total Accrued Depreciation). Complete the reserve funding financial analysis using the threshold funding goal and make calculations to amortize any cash flow deficits over the twenty-five to thirty-year analysis. The Study will also adjust the normal annual contributions to include amortized deficit funding, if needed, to meet all anticipated expenditures over the next twenty-five to thirty years. The Structural Integrity Reserve Study may reflect information provided and collected by the engineer's site visit report and your association, and assembled for the association's use, not for the purpose of performing an audit, quality/forensic analysis, or background checks of historical records.

CERTIFICATION:

I hereby certify that I have no interest in the property, present or contemplated, and that neither the assignment to complete this study nor the fee derived there from is contingent upon its results. I have personally conducted a site-visit/inspection of the association. Unless otherwise noted in the report, and to the best of my knowledge and belief, all statements and data in this report are true, subject to any contingent limiting conditions noted herein.

This report is furnished at your request in strict confidence by us as your agent for your exclusive use. The report is not to be construed as a guarantee or warranty, expressed or implied, of the property or the equipment therein or of their fitness for a particular purpose. This report is made under the guidelines of the American Institute of Certified Public Accountants, the Community Associations Institute guidelines, and the Professional Reserve Specialists Code of ethics.


Sundeep J. Jay – RS & PRA

INTRODUCTION

To have a better understanding of the scope of this report, the purpose of reserves, and to help incorporate the figures into your budget, we recommend reading the entire narrative section of the report. The narrative section is the “A” pages of this report.

J. R. FRAZER, INC. (Reserve Studies and Valuation Services) was retained by the Association to prepare a Structural Integrity Reserve Study of the common areas for the purpose of developing a repair, maintenance, and replacement needs plan for the association’s long-term components/assets. The “Full Structural Integrity Reserve Study which includes a Site-Visit/Inspection” was completed by Sundeep J. Jay – RS & PRA.

This Association’s board authorized a Structural Integrity Reserve Study as required by Florida statutes and accordingly has elected to engage an independent analyst/specialist to prepare a reserve schedule for inclusion in the association’s budget. This reserve study includes multiple components/assets within each reserve category with a twenty-five to thirty-year cash flow analysis.

This report is prepared as a budgeting tool to assist the association in its long-range financial planning. Its use for any other purpose is not appropriate. The visual observations made do NOT constitute an “Engineering Inspection with Destructive Testing and or Sample Gathering for analysis purposes” and are not detailed enough to be relied upon, nor should they be relied upon to determine building ordinances, local/state codes, safety of the building, soundness of the structure, and or habitability of any building and or structure related to any individual components. To uncover the soundness of your building structure and foundation, a separate more in-depth inspection report should be ordered through your chosen engineering company. An in-depth analysis normally includes some form of destructive testing and a further in-depth walk-through inspection process by an engineer. We recommend to all condo associations that a full level 2 engineering report should be ordered on a periodic basis and this information needs to be provided to our company to incorporate into this Structural Integrity Reserve Study.

The statutory requirement for all condominium associations simply states that reserves must be 100% annually funded for roofing, painting, and paving plus any other items in which the cost to maintain, repair or replace those items exceeds \$10,000. The statutory requirements for condominium buildings that are 3 stories or higher “are required” to order a Structural Integrity Reserve Study at least once every 10 years. The study must include, at a minimum, the following items as related to the structural integrity

reserve study: Roof, Load-bearing Walls/Primary Structural Members, Fireproofing and Fire Protection Systems, Plumbing, Electrical Systems, Waterproofing and Exterior Painting, Windows & Exterior Doors, and any other item that has a Deferred Maintenance Expense or Replacement Costs that exceeds \$10,000 and the failure to replace or maintain such item negatively effects the other items listed in the Structural Integrity Reserve Study.

All budgets adopted after December 31st, 2024, for members of a unit-owner-controlled association that must obtain a Structural Integrity Reserve Study (SIRS) may not determine to provide no reserves or less reserves for all items listed in the Structural Integrity Reserve Study.

This study uses the “**Pooled Reserves**” which is the funding for multiple categories/assets which are combined into one general account in the Reserve Funding Analysis section (D pages of the report), from which you pay all expenses.

There are 3 types of Funding Goals – Baseline Funding, Threshold Funding, and Full Funding. The explanation for each of the funding types is in the back of this reserve study under definitions. **This reserve study uses the Threshold Funding Goal which establishes an annual reserve funding goal of keeping the year-end reserve balance above a specified dollar amount over a period of 25 years.** This minimum reserve amount is derived by taking approximately 10% to 30% of the association’s annual operating revenues and or the annual operating expenses (whichever the reserve analyst deems appropriate). As we calculate the reserve funding analysis on the D pages of this report, we will ensure that the year-end reserve balance never falls below the minimum threshold of 10% to 30% of the current year’s annual operating revenues/expenses over the next 25 years. In some cases, we may use a lower or higher amount depending upon the association’s current financial situation. The board may, at any time, decide to increase the minimum threshold to an amount that is more conservative and financially responsible.

The financial analysis uses the cash flow method to determine the financial needs of the association. This analysis further takes into consideration all the components/assets which are then combined into one SIRS account from which all expenses are paid (pooled reserves) to create a twenty-five-year cash flow analysis above a minimum threshold while meeting the association reserve obligations. The physical analysis data includes those components that are included on the C pages of the reserve study. Each reserve component item used in this reserve study uses the straight-line funding calculation by obtaining the quantity of units, calculating the replacement costs, establishing a normal/useful life, and estimating the remaining useful life of each component item. The information is gathered through the on-site visit (or prior on-site visits), independent research, engineering report(s), reviewing existing maintenance records, association’s management, and verification of actual historical replacement cost of the

components.

Since inflation cannot be accurately predicted, replacement costs herein are at current construction cost. Inflation is taken into consideration when reserve study updates are ordered. If your association does not order annual reserve study updates, we recommend adding 3% to 5% to every year's annual reserve contribution until the next reserve study update is ordered.

The reserve program is designed to provide all or part of the funds necessary to pay for maintaining, repairing, and replacing the capital improvements of the Association.

This report is not a "phase 1" or "phase 2" Milestone Inspection Report. No destructive testing or sample gathering is completed during the on-site visit. A Structural Integrity Reserve Study is a budgeting tool used to assist the board to arrive at a fully funding annual contribution amount. A Milestone Inspection Report should be ordered by the association as per Florida Statutes once your building reaches 30 years of age from the date of the certification of occupancy. This does not mean that you should not order a Milestone Inspection earlier than the 30 years stated by the State of Florida. In some cases, the city/county may require the Milestone Inspection earlier than the 30 years stated by the State of Florida.

NOTE: Code changes, "pre-mature" structural failing items, construction defects, neglect of inspections, neglect of maintenance of the building envelope/balconies/catwalks, upgrades, surprises, sudden technological changes, and builder defects are not a part of this reserve study. These items, if encountered, may require special assessments and or a bank loan.

PURPOSE OF RESERVES

Reserves are monies budgeted, collected, and set aside for components/asset replacements or deferred maintenance. The establishment of reserve accounts begins with the developer and or the board who has a fiduciary responsibility for the establishment of an association's budget. With the assistance of this report or a prior reserve study, the board will establish, as per Florida Statutes, the reserve accounts for the future replacements or deferred maintenance of the common area structural items as outlined by the Structural Integrity Reserve Study.

Without adequate reserves, owners may be subject to either special assessments or the association may not be able to repair or replace the common area assets. Reserve funds enable an association to maintain the common areas by reducing the risk of special assessments and thereby minimizing the impact of financial challenges to the unit owners. The establishment of "fully funding" annual reserve contributions accomplish the following:

- Establishes and preserves reserves for a strong financial position to meet future expenditures.
- Reserves reduce the probability for special assessments.
- It allows for the replacement/maintenance of the items listed on the C pages of this report over a period of 25 to 30 years according to the remaining life estimated.
- All owners share the expenses of the association "equally/equitable" by paying their fair share of the cost while living in the association.

Reserve funding is for TODAY'S component/asset depreciation collected either monthly, quarterly, semi-annually, or annually. Every day the sun, rain and wind are decomposing the roof and building, water and the chemical within the water is deteriorating the plumbing pipes, and technological changes are making certain electronic devices obsolete. The daily depreciation will eventually require the replacement or maintenance of these assets.

Adequate funding is the key to reserves. Just having reserve funds does not make an associations' financial future strong. Reserves must be set at an annual goal of 100% funding according to Florida Condominium Statutes.

By annually fully funding reserves, the association will have the monies set aside to pay and replace the components/asset items

listed on the C pages of this report based on the estimated remaining lives of each of the assets. There will be cost variances when it comes time to have the component items replaced/maintained due to inflation, code changes, and or upgrades. At the time of replacement, the association should obtain 3 bids from various vendors and accordingly choose a vendor that will best accomplish the goals of the association.

This report does not assist in reducing and or bridging the gap between the Fully Funded Balance/Total Accrued Depreciation and the Association's Current Reserve Balance as stated on the B1 page of this report. The association can elect to close this deficit gap through a special assessment.

NAVIGATING & UNDERSTANDING THIS REPORT

Reserve Summary Section – (B1 & B2 pages):

This section summarizes the entire report providing the grand total for the Current Replacement Cost, Normal Annual Contribution, Fully Funded Balance (Total Accrued Depreciation), Association's Current Reserve "Fund Balance," Fund Deficit, and the Contribution needed for future years. For definitions of terminology, such as Fully Funded Balance, please see "Definitions" section located at the end of this report.

The Normal Annual Contribution (stated on page B1) versus the Fully Funding Annual Contributions (stated on the B2 page) for either next year or future years might be different depending upon your current reserve balance and expenses related to projects that will materialize over the next 1 to 25 years. The Annual Contributions stated on the B2 page will be higher if there is a deficit in your reserve balance over the next 25 years. The annual contributions stated on page B2 and B3 of the report are the State of Florida required fully funding annual reserve contribution amounts.

The Normal/Useful Life and Remaining Life on the Reserve Summary page are "averages" of life. The actual Useful Life and Remaining Life for each individual reserve component are contained in the Reserve Analysis section (C pages). Do not consider the useful life and remaining life of any single reserve category from page B1 – it is an average and not specific. For example, in Roofing, a metal roofing system can have a 30-to-35-year useful life while a flat BU roofing system will only have a 20-year useful life.

The Summary pages B2-B4 provides the association's current year contribution and the newly calculated Fully Funding Annual Contribution for the next 25 years adding in any deficit amounts that "might" have occurred in the funding analysis located on the D pages of this report. On pages B2 to B4, we have added the normal annual contribution with any deficit amounts (if applicable) for the first 25 years only that were needed to maintain a positive balance (minimum threshold) in your reserve account. The payments listed on page B2 to B4 are the recommended fully funding annual contribution amounts that are required by the State of Florida.

Reserve Analysis Section - (C pages):

This section provides a detailed breakdown of all component items (assets) into each major reserve category listed from page B1.

All reserve component items are further broken down to provide the number of units (measurements), individual unit cost, useful life, estimated remaining life, annual contribution for that component item and the Fully Funded Balance/Total Accrued Depreciation. Information gathered from the on-site visit (or prior on-site visit) along with information received by your association or engineer is in this section of the report.

The unit of measurement used throughout the report is square feet and or unit counts (such as the number of light poles in the parking lot). If the measurement is anything different, then on the C pages of the report, it will be stated with the component line item as “lf” (linear feet), “sy” (square yards). Linear feet measurements are usually found with fencing, railings, and curbs. Square yards are usually found with asphalt and carpeting.

Please keep in mind when reviewing the C pages of this report that any component items with a remaining life of 1 year are due to be replaced during the next budget year. In some cases, depending upon the condition of the asset, it may require replacement and or maintenance in the current year.

Reserve Funding Analysis – (D pages):

In this section, broken down year by year for the next 30 years, are all the annual reserve expenses, annual reserve contributions, beginning and year-end reserve balances. It is in this section under “amortized deficit” that will show the additional deficit contribution needed (if applicable) to the Normal Annual Contribution to maintain a positive balance in the reserve account. The amortized deficit column can vary year by year. In any given year, if the association’s reserve fund balance falls below the minimum threshold fund balance (i.e., \$50,000 - \$100,000) an amount is added to bring the fund balance to the stated minimum threshold amount. This deficit amount is then equally divided into the preceding years hence not creating a burden in any 1 particular year. To further clarify..., if the minimum threshold fund balance is \$50,000 and then in year 5 the association’s fund balance is a negative \$10,500, then \$60,500 will be needed to bring the fund balance to \$50,000. This \$60,500 deficit will then be divided by the 5 preceding years adding \$12,100 a year to the normal annual contribution.

The minimum threshold is set at approximately 10% to 30% of the association’s operating revenues or expenses, but this amount can be lower or higher depending upon the discretion of the reserve analyst. If the board wishes to increase this amount, please contact J. R. Frazer’s office.

Photo Section:

This section provides photographs of most of the component items listed in this reserve study – but not all. It does not provide photographs of problem areas, though they may be observable in the photographs – such as cracking on the asphalt paving.

Financial & Other Documentation:

This section provides some of the information your association has provided to us to prepare this report. It includes items such as the association's Balance Sheet, Profit & Loss Statements, and Budget Statements.

Definitions and Consulting Contractors:

This section provides the definition of terms that are used in this report to better help the reader understand the terminology used in this report.

Also, in this section are the names and phone numbers of contractors that our company has gathered over the last 25 years. We cannot guarantee their workmanship, nor do we have a preference to any one contractor. We recommend interviewing at least 3 contractors and obtaining a copy of their license(s) and insurance prior to signing any agreements. Please contact our office if your experience with any of the contractors is less than professional. We do not gain from your use of these contractors, and we also do not want to promote their business if their business practices are not professional. They will be removed from our list.

This section also includes the Florida Statutes related to condominium reserve funding and budgeting.

GENERAL ANALYST RECOMMENDATIONS

1. We recommend making the stated fully funding annual contributions on the B2 page of this report. The contribution is made up of the Normal Annual Contribution plus a required amortized deficit amount (if applicable) to meet anticipated cash flows over the next twenty-five to thirty years. By funding the recommended contributions using the cash flow funding method, the Association should be able to pay future reserve expenditures over the next 25 to 30 years with adequate contributions from the reserve funds.

The Normal Annual Contribution represents the replacement cost divided by the number of years of normal/useful life.

2. We recommend the income generated within the reserves remain in the reserves. Our financial analysis indicates interest generated by reserve funds will help offset a small portion of inflation cost. This system of compounding interest allows the Association to control some reserve increases but should be updated at a minimum of every 1 to 2 years. This report does not consider future interest earned on the bank reserve balance for 3 reasons. Firstly, interest earned on the reserve balance can vary on an annual basis. Secondly, we consider the interest in helping bridge the difference between the Fully Funded Balance/Total Accrued Depreciation and the actual Current Reserve Balance. Thirdly, it helps offset a small portion of future inflation. If reserve study updates are not ordered annually, we recommend associations to make inflationary adjustments to their future annual contributions.

3. The association's current reserve schedule may not have been complete in identifying all the needs of the association. We may have added components and recommend the association reserve for all components in this reserve study. In some cases, we might have combined certain reserve categories to help simplify and or improve budgeting methods. If there are components/assets items that might have been omitted from the reserve schedule and the association wishes to have these items included, please contact our office for a revised copy of the report.

4. All expenditures are based upon a cash flow analysis with pooled reserves to meet expenses. This allows all funds in each reserve category to be used for paying for any appropriate component or components which may suddenly and unexpectedly need to be repaired or replaced. We strongly recommend annual updates of the reserve study to maintain adequate funding levels.

5. When undertaking large projects, the reserve study should be used to compare the costs stated in the report with the actual

costs on the contract. Accordingly, the association should either special assess the difference and or adjust the future year's reserve contributions to help fund the costs differences. This will typically apply for major concrete restoration projects, and or mechanical change outs where code changes may be applicable.

6. Annually, the association should compare the reserve balances budgeted on the last column of the D pages of this report with the association's current balance sheet and or current bank statement. Any major differences should be accounted for and adjusted into future reserve contributions. If there are large differences, the association should update their reserve study.

7. There will be times when natural disasters such as floods, hurricanes, and windstorms can cause considerable damage to uninsurable property. A policy of special assessments should be considered and adopted by the board to help fund for these unforeseeable events.

8. Special assessments, even with annually fully funding reserves, may still be required under certain circumstances. The following are some, but not all, circumstances where the costs may exceed the amounts stated in this report.

a. Mechanical Items (fire pumps & fire systems, generators, etc.)

Additional costs due to code changes, relocation of mechanical item(s), additional wiring and or piping needed, complete change out of the wiring and or the plumbing system, upgrades, technological changes, etc.

b. Concrete Restoration

Additional costs due to unusual weather, prior poor workmanship, material defects, lack of ongoing maintenance, not properly sealing/painting the building within a reasonable time, aging conditions, excessive salt intrusion, etc.

c. Roofing Systems

Additional costs due to prolonging the replacement of the roofing system, code changes, unusual weather, prior material and or workmanship defects, settlement of the building causing the sloping of flat roofing system to redirect water away from the drains, damage to wood trusses, etc.

SPECIAL NOTES

Information supplied by the Association includes a copy of the 2025 financial reports, a copy of the current reserve budget, engineering report, and contracts/invoices. We may have also obtained verbal information from the engineer and or the association's management company regarding past and or future repairs and or replacements along with the timing of past replacements. All past and present information received by the engineer and or the association is deemed reliable for the purposes of this report. The actual or projected total presented in the Reserve Study is based upon information provided and was not audited.

As a result of the study, if the current reserve fund balance is less than the total accrued depreciation, you have a reserve fund deficit. If the fund balance is greater than the reserve requirement, you have a reserve fund overage.

When the association's current reserve fund balance is less than the current total accrued depreciation, additional funds MAY be added to the normal annual contribution if current funding levels will not meet the projected twenty-five to thirty-year cash flow analysis. This will allow the funding deficit to be paid down over a period of years within the twenty-five to thirty-year period.

As stated earlier, this report does not assist in reducing and or bridging the gap between the Fully Funded Balance/Total Accrued Depreciation and the Association's Current Reserve Balance as stated on the B1 page of this report. The association can elect to close this deficit gap through a special assessment.

All funding deficits in this study are amortized into previous years (when applicable) based upon the cash flow analysis. This amortized deficit amount is added to the normal annual contribution yielding the new fully funding annual contribution amount. The goal is to meet anticipated reserve expenditures over the next twenty-five to thirty years without the reserve fund balance falling below the minimum threshold balance. **Additional funds over the Normal Annual Contribution ARE NOT needed for your association to meet minimal threshold funding requirements and anticipated expenditures.**

We do not add future inflation or interest earned on the association reserve bank balance. These items are difficult to predict and can mislead the user of the report. Instead, we use current costs with no inflation and no interest. To ensure continued adequate funding, we strongly recommend annual updates to adjust for increased cost, adjustments to estimated remaining life, reserve spending, and changes in your funding allocations. The only way to maintain accurate reserves and reduce the need for special assessments would be to update your reserve study annually.

This reserve study is not only based on “estimated cost figures” for replacement/maintenance/restoration, but also an “estimated time frame” for the replacement/maintenance/restoration of the association’s components/assets. Everything can adjust by a few years and most things will not be replaced/restored until further in-depth inspections/investigation is completed by either an engineer and or a contractor specializing in a particular field such a structural engineer and or a MEP engineer. Painting is the only item that an association can control and should maintain a planned course of action to have the association’s building(s) painted according to a set schedule based on your location. But for the purposes of this report, we have provided a roadmap that will help guide this association to meet future obligations without the reserve fund balance falling below the minimum threshold. As your association orders future updates, we will replace estimated market prices with actual amounts incurred by the association. We will also adjust either the useful life and or the remaining life of the component/asset depending upon how an asset is depreciating in your association.

As stated earlier in this report, this reserve study is not a phase 1 or phase 2 Milestone Inspection Report. No destructive testing or sample gathering is completed during the on-site visit. The on-site visit should not be considered a project audit or quality inspection. Reserve studies are a budgeting tool for the replacement/maintenance/restoration of the association’s building/components/assets. We have based our findings on the age of the building, information that may have been provided by your engineer and association and obvious visual deterioration on components/assets seen during the on-site visit. It is the responsibility of the association to periodically hire the services of an engineer and or general contractor(s) on items such as building restoration, large mechanical items, seawalls, roofing structure/roofing systems, fire systems, and or any component item that may negatively affect the structure of the building. By completing this report, we hope to provide the association with a reasonable budget to have the funds in place to complete restoration/maintenance/replacements of their short and long-term assets by reducing the likelihood of special assessments. Lastly, though we try to narrow down the remaining lives for the replacement of your components/assets, the variance can be as much as 5-10 (+/-) years depending upon your location and or the workmanship of the last work completed on the building and or the specific component asset. In some cases, such as seawalls, it can vary as much as 10-20 years.

FINANCIAL NOTES

This report has been prepared based on the cash flow method of reserve funding. The cash flow method begins with the current year's reserve balance and then calculates the funding balance based on the yearly reserve contributions coming in and expenses/money going out for the next 30 years. This report was prepared to always maintain a minimum reserve fund balance (minimum threshold) of \$150,000 for the next 25 years. To arrive at the year-end reserve fund balance, we take the beginning fund balance and minus the estimated component item expense(s) and then add the annual contribution we have stated on this report. On the D pages of this report, we show this calculation on a year-by-year basis starting in the year the report was ordered. While we are running the reserve analysis on the D pages of this report, if in one of those years, the reserve fund balance falls below the minimum threshold of \$150,000, we add more money to the annual contribution to stay at a minimum fund balance of \$150,000. This amount that is added to the normal annual contribution is called a fund deficit amount – highlighted in blue on the D pages of this report IF applicable to your association.

This association's financial strength is low with less than a 34% reserve level of funding. This association's reserves are approximately 21.3% funded. The percentage is derived by dividing the Association's Reserve Fund Balance of \$354,557 on January 31st, 2026, by the Fully Funded Balance/Total Accrued Depreciation stated on page B1 of this report. The association's risk of special assessments is high during any one yearly period. Associations that are less than 70% funded run the risk of reserve shortfalls, special assessments, and detrimental deferred maintenance.

This association is currently paying \$159,396 for their 2025 annual reserve contribution. Based on the calculations derived from this reserve study, the Normal Annual Reserve Contribution for 2026 through 2055 is \$203,605 annually. Please review the B2 page of this report to see future reserve contributions. Currently, deficit funding requirements are not needed. Please keep in mind that this reserve study does not take into consideration future inflation, unexpected mechanical/structural failing items, construction defects, components/assets that are neglected, upgrades, code changes, major interior renovations, and or the interest earned on the association's reserve balance.

The association should set a goal of collecting the recommended annual reserve contributions stated in this report to reduce the possibility of special assessments. We urge associations to be at least 50% to 70% funded to greatly reduce the risk of special assessments and or to reduce the likelihood of future deficit funding on future reserve updates.

J. R. Frazer, Inc. recommends an increase in the association's annual reserve contribution. The newly calculated annual reserve contribution is a more accurate reserve budget number which can benefit the entire association. This increased annual reserve contribution amount will allow the current owners to pay their fair share of today's component/asset depreciation of which assets will eventually require future maintenance & replacements.

ADDITIONAL NOTES

Fully funding reserves on an annual basis allows an association to "reduce" the possibility of current and or future special assessments. Fully funding reserves may still require special assessments due to unforeseen circumstances such as code changes, increase in project costs, upgrades/major renovations, and other circumstances that may arise in the future of an association. When collecting less than the annual fully funding reserve contribution, the association "greatly" increases the risk of special assessments.

While reviewing this report, keep in mind that the report is not calculated to close the gap between the Fully Funded Balance/Total Accrued Depreciation (reserves that should have been saved by the association) and the Current Reserve Funds held by the association as of the date of this report (see page B1). This report is prepared to help fund all the maintenance/replacements of components/assets listed on the C pages of this report over a period of 30 years.

The association can decide to fund the deficit by closing the gap between the Fully Funded Balance/Total Accrued Depreciation and the Current Reserve Fund Balance. They will need to determine whether they want to fund the difference with 1 special assessment and or spread it out over future years. Florida statutes do not require associations to close this gap, but to prepare a plan that will help fund future maintenance and or replacements of their components/assets over a period of 25 to 30 years.

As per Florida State Statutes, all condominium associations with residential buildings that are 3 stories or higher in height must annually fully fund reserves as per the SIRS.

LIMITATIONS, EXCEPTIONS, AND EXCLUSIONS

Section 1 – Site Visit.

The following are typically excluded from the “Site Visit”. Items excluded from the Site Visit are not necessarily excluded from the Physical Analysis or Financial Analysis.

- A. Systems or components of a building, or portions thereof, which are not Readily Accessible, or are excluded due to circumstances beyond the control of the Reserve Analyst or which the Client has agreed or specified to be excluded.
- B. Systems or components, or portions thereof, which are underground, underwater, or where the reserve analyst must encounter water.
- C. Determining compliance with manufacturers' installation guidelines or specifications, building codes, accessibility standards, conservation or energy standards, regulations, ordinances, covenants, or other restrictions.
- D. Structural, architectural, forensic, geological, environmental, hydrological, land surveying, or soil-related examinations.
- E. Acoustical or other nuisance characteristics of any system or component of a building, complex, adjoining property, or neighborhood.
- F. Conditions related to animals, insects, or other organisms, including fungus/mold, and any hazardous, illegal, or controlled substance, or the damage or health risks related items.
- G. Risks associated with events or conditions of nature including, but not limited to; geological, seismic, wildfire, hurricanes, and flood.
- H. Water testing any building, system, or component or determine leakage in shower pans, pools, spas, or any body of water.
- I. Differentiating between original construction or subsequent additions or modifications.
- J. Fire extinguishing and suppression systems and components or determining fire resistive qualities of materials or assemblies.
- K. Elevators, lifts, and dumbwaiters.
- L. Lighting pilot lights or activating or operating any system, component, or appliance that is shut down, unsafe to operate or does not respond to normal user controls.
- M. Operating shutoff valves or shutting down any system or component.
- N. Dismantling any system, structure, or component or removing access panels.

Section 2 – Physical Analysis.

The following are typically excluded from the “Physical Analysis”.

- A. Specifying repairs/replacement procedures or estimating cost to correct.
- B. Systems or components that typically experience an Extended Useful Life.
- C. Systems or components that do not have a predictable Remaining Useful Life.
- D. Systems or components that the client has advised the Reserve Analyst to omit from the Reserve Study.

- E. Systems or components provided for in whole under a maintenance contract.
- F. Systems or components provided for in whole within another part of the budget.
- G. Leased systems or components.
- H. Services of a legal nature including legal interpretations or opinions of any documents, maps, etc.

Section 3 – Financial Analysis

The following are typically excluded from the “Financial Analysis”.

- A. Expected rates of return on investments significantly beyond that of current savings rates.
- B. Expected settlements or monies owed or to be transferred to reserves before the final amount has been set and approved by the board.
- C. Limitations to increases of the reserve contribution or assessments from Governing Documents.
- D. Investment strategies or financial planning advice beyond that of the recommended reserve contribution.
- E. Auditing or other accounting services, Reserve Analyst shall assume financial information provided by the client or client’s representative is accurate.

CONDITIONS OF RESERVE STUDY

Unless otherwise stated, this evaluation is subject to the following conditions:

J. R. Frazer, a reserve specialty firm, has not formed a legal opinion as to what components may be included or are the responsibility of the association. We therefore assume no responsibility in the determination of which components and their related cost may be excluded from the reserve study application.

Information as to the association's responsibilities has been obtained from the client in discussions or a review of the documents. We make no guarantee nor assume liability for the accuracy of any data, financial statements or fund balances supplied by the client, opinions, or estimates as furnished by others that we used in formulating this evaluation. Any changes to our reports resulting from missing information or misinformation will be added to the report at an expense equal to our hourly fee rate.

The dimensions and quantities were gathered either by actual physical measurements, review of construction plans, or supplied by the association. All previous measurements and quantifications are deemed accurate for future use and updates.

Neither all nor any part of the contents of the association's reserve study report shall be conveyed to another reserve specialist, estimator, valuation person, or the public through advertising, news, or other media without the written consent and approval from J. R. Frazer, Inc. The report can be given to association members, banks for mortgage/financing purposes, and potential buyers that have signed a purchase contract with a seller of the association.

The valuation includes a description of the premises. Our assessment of the physical condition of the improvements described within has been based upon visual observation without destructive intrusions. No warranty is made, and no liability is assumed for the soundness of the structure or its components. The Association should consider additional inspection(s) for any safety concerns or hidden defects. The valuations derived and expressed within are not applicable to any other property regardless of similarity. The valuation is as of the date specified.

The values provided in this analysis are derived and based upon cost during common and normal economic conditions. These values do not reflect the significant impact on cost which may occur because of supply shortages and demand increases which are typically created as a result of disasters such as hurricanes, windstorms, etc. All updates are based upon the previous validated data.

This analysis represents my opinion based on accepted valuation systems and reserve methodology as to the values of the described property. As stated in the report, it has in no way been contingent upon the report of predetermined or specified value, nor has compensation for this reserve analysis report been contingent upon the value of the property considered.

Report completed by:
J. R. FRAZER, INC.
Sundeep J. Jay
125 South State Road 7 – suite: 104/197
Wellington, Florida 33414
561-488-3012

2025 "Structural Integrity Reserve Study" RESERVE SUMMARY

**Promenade at Boca Pointe Condo Association No. 3, Inc.
7201/7209/7217/7225/7233 Promenade Dr., Boca Raton, FL 33433**

CASH FLOW METHOD WITH POOLED RESERVES
Prepared for Budget Year 2026 - February 1st through January 31st
Revised: July 28th, 2025

RESERVE CATEGORY	REPLACEMENT COST	AVERAGE USEFUL LIFE (YEARS)	AVERAGE REMAIN LIFE (YEARS)	NORMAL ANNUAL CONTRIBUTION	FULLY FUNDED BALANCE	ASSOCIATION FUND BALANCE 1/31/2026	FUND (DEFICIT) OVERAGE	2026 ANNUAL RESERVE CONTRIBUTION	2026 MONTHLY CONTRIBUTION
A - Roofing	1,645,704	24	15	69,745	588,585	*	*	*	*
B - Painting/Waterproofing	319,569	11	11	30,420	-	*	*	*	*
C - Structure/Restoration	1,540,486	26	26	59,020	13,620	*	*	*	*
D - Fire Protection Systems	459,650	29	16	15,711	200,440	*	*	*	*
E - Plumbing	487,390	46	14	10,591	338,748	*	*	*	*
F - Electrical Systems	269,100	42	15	6,378	175,806	*	*	*	*
G - Windows/Doors	477,300	41	11	11,740	349,344	*	*	*	*
May - Jan. Reserve Contributions						119,547			
Association Fund Balance (04/30/2025)						235,010			
<hr/>									
TOTAL	\$ 5,199,199	Life range of years are averaged, see actual estimated years in "C" pages.		\$ 203,605	\$ 1,666,543	354,557	(1,311,986)	\$ 203,605	\$ 16,967

Note: Fully Funded Balance - "Total Accrued Depreciation" (for a complete definition, see the glossary section of this report)

Note 1: The association has approximately \$398,322.43 in their reserve account as of April 30th, 2025

Note 2: Based on the Fully Funded Balance, we separated the current reserve balance based on the following: Traditional Reserve Account = \$163,312 (41%) and SIRS = \$235,010 (59%)

Note 3: It is required that the association create a separate line item on the balance sheet for the Traditional Reserve Balance and another account for the Structural Integrity Reserve Balance

Note 4: The Traditional Reserve monies cannot be comingled with the Structural Integrity Reserve monies as per Florida Statutes

Special Note: We have reset the remaining life to full life for the Painting and Structure/Restoration components within each of the categories. This report assumes based on conversations with management that these projects will either be special assessed and or paid through a bank loan/line of credit. The start of these projects are estimated in year 2025. The estimated actual costs for the Paint and Restoration project is approximately \$3 million to \$4 million. We have only estimated for future reserve contributions a total of \$1,925,649 over a period of 10 to 45 years.

"SIRS" RESERVE CONTRIBUTION FORECAST

Promenade at Boca Pointe Condo Association No. 3, Inc.

7201/7209/7217/7225/7233 Promenade Dr., Boca Raton, FL 33433

RESERVE CATEGORY	Yr. 2025 Contribution	Yr. 2026 Contribution	Yr. 2027 Contribution	Yr. 2028 Contribution	Yr. 2029 Contribution	Yr. 2030 Contribution	Yr. 2031 Contribution	Yr. 2032 Contribution	Yr. 2033 Contribution	Yr. 2034 Contribution	Yr. 2035 Contribution
Normal Annual Contribution	159,396	203,605	203,605	203,605	203,605	203,605	203,605	203,605	203,605	203,605	203,605
Plus Amortized Deficit Amount		0	0	0	0	0	0	0	0	0	0
TOTAL ANNUAL FULLY FUNDING RESERVE CONTRIBUTIONS	\$ 159,396	\$ 203,605	\$ 203,605	\$ 203,605	\$ 203,605	\$ 203,605	\$ 203,605	\$ 203,605	\$ 203,605	\$ 203,605	\$ 203,605
Annual Accumulated Inflation Used:			3.50%	7.00%	10.50%	14.00%	17.50%	21.00%	24.50%	28.00%	31.50%
Future Inflationary Annual Contributions:			\$210,731	\$217,857	\$224,984	\$232,110	\$239,236	\$246,362	\$253,488	\$260,614	\$267,741

The association may adjust replacement reserve assessments annually to take into account an inflation adjustment and any changes in estimates or extension of the useful life of a reserve item.

"SIRS" RESERVE CONTRIBUTION FORECAST

Promenade at Boca Pointe Condo Association No. 3, Inc.

7201/7209/7217/7225/7233 Promenade Dr., Boca Raton, FL 33433

RESERVE CATEGORY	2036 Contribution	2037 Contribution	2038 Contribution	2039 Contribution	2040 Contribution	2041 Contribution	2042 Contribution	2043 Contribution	2044 Contribution	2045 Contribution
Normal Annual Contribution	203,605	203,605	203,605	203,605	203,605	203,605	203,605	203,605	203,605	203,605
Plus Amortized Deficit Amount	0	0	0	0	0	0	0	0	0	0
TOTAL ANNUAL FULLY FUNDING RESERVE CONTRIBUTIONS	\$ 203,605	\$ 203,605	\$ 203,605	\$ 203,605	\$ 203,605	\$ 203,605	\$ 203,605	\$ 203,605	\$ 203,605	\$ 203,605
Annual Accumulated Inflation Used:	35.00%	38.50%	42.00%	45.50%	49.00%	52.50%	56.00%	59.50%	63.00%	66.50%
Future Inflationary Annual Contributions:	\$274,867	\$281,993	\$289,119	\$296,245	\$303,371	\$310,498	\$317,624	\$324,750	\$331,876	\$339,002

The association may adjust replacement reserve assessments annually to take into account an inflation adjustment and any changes in estimates or extension of the useful life of a reserve item.

"SIRS" RESERVE CONTRIBUTION FORECAST

Promenade at Boca Pointe Condo Association No. 3, Inc.

7201/7209/7217/7225/7233 Promenade Dr., Boca Raton, FL 33433

RESERVE CATEGORY	2046 Contribution	2047 Contribution	2048 Contribution	2049 Contribution	2050 Contribution	2051 Contribution	2052 Contribution	2053 Contribution	2054 Contribution	2055 Contribution
Normal Annual Contribution	203,605	203,605	203,605	203,605	203,605	203,605	203,605	203,605	203,605	203,605
Plus Amortized Deficit Amount	0	0	0	0	0	0	0	0	0	0
TOTAL ANNUAL FULLY FUNDING RESERVE CONTRIBUTIONS	\$ 203,605	\$ 203,605	\$ 203,605	\$ 203,605	\$ 203,605	\$ 203,605	\$ 203,605	\$ 203,605	\$ 203,605	\$ 203,605
Annual Accumulated Inflation Used:	70.00%	73.50%	77.00%	80.50%	84.00%	87.50%	91.00%	94.50%	98.00%	101.50%
Future Inflationary Annual Contributions:	\$346,129	\$353,255	\$360,381	\$367,507	\$374,633	\$381,759	\$388,886	\$396,012	\$403,138	\$410,264

The association may adjust replacement reserve assessments annually to take into account an inflation adjustment and any changes in estimates or extension of the useful life of a reserve item.

2025 PHYSICAL RESERVE ANALYSIS

Promenade at Boca Pointe Condo Association No. 3, Inc.

Reserve Category	Component Items	Quantity Units	Unit Cost \$	Replacement Cost \$	Useful Life	Remaining Life	Normal Annual Contribution	Current Reserve Requirement
A - Roofing								
	1 - Condo Bldg. Roofing System							
	a - condo 7201-7209 bldg. flat roof 22	7,029	43.96	\$308,995	20	16	\$15,450	\$61,800
	b - condo 7201-7209 portico flat roof 22	105	43.96	\$4,616	20	16	\$231	\$924
	c - condo 7217-7225 bldg. flat roof 22	5,396	43.96	\$237,208	20	16	\$11,860	\$47,440
	d - condo 7217-7225 portico flat roof 22	105	43.96	\$4,616	20	16	\$231	\$924
	e - condo 7233 bldg. flat roof 22	2,766	43.96	\$121,593	20	16	\$6,080	\$24,320
	f - condo 7233 portico flat roof 22	53	43.96	\$2,330	20	16	\$117	\$468
	g - utility connecting bldg. flat roof 22	692	43.96	\$30,420	20	16	\$1,521	\$6,084
	1 - Condo Bldg. Roofing System Subtotal			\$709,778			\$35,490	\$141,960
	2 - Condo Tile Roofing System							
	a - condo 7201-7209 bldg. tile roof	4,065	37.55	\$152,641	30	9	\$5,088	\$106,848
	b - condo 7201-7209 portico & trash tile roof	1,300	37.55	\$48,815	30	9	\$1,627	\$34,167
	c - condo 7217-7225 bldg. tile roof	2,375	37.55	\$89,181	30	9	\$2,973	\$62,433
	d - condo 7217-7225 portico & trash tile roof	1,300	37.55	\$48,815	30	9	\$1,627	\$34,167
	e - condo 7233 bldg. tile roof	2,790	37.55	\$104,765	30	9	\$3,492	\$73,332
	f - condo 7233 portico & trash tile roof	650	37.55	\$24,408	30	9	\$814	\$17,094
	g - note: the building tile roofing system original installation date could not be determined							
	h - note: the building tile roofing system may need to be replaced sooner then the 9 years stated in this report							
	2 - Condo Tile Roofing System Subtotal			\$468,625			\$15,621	\$328,041
	3 - Carport Tile Roofing System							
	a - southeast carport tile roof	4,236	15.55	\$65,870	30	9	\$2,196	\$46,116
	b - southwest carport tile roof	2,860	15.55	\$44,473	30	9	\$1,482	\$31,122
	c - note: the carport tile roofing system original installation date could not be determined							
	3 - Carport Tile Roofing System Subtotal			\$110,343			\$3,678	\$77,238
	4 - Rooftop A/C Stands							
	a - rooftop a/c stands 22	78	3,240.00	\$252,720	40	36	\$6,318	\$25,272
	4 - Rooftop A/C Stands Subtotal			\$252,720			\$6,318	\$25,272
	5 - Seal Tiled Roofing System							
	a - seal tile roofing systems	19,576	3.50	\$68,516	10	10	\$6,852	\$0
	5 - Seal Tiled Roofing System Subtotal			\$68,516			\$6,852	\$0
	6 - Roofing Other							
	a - roofing repairs & misc.	35,722	1.00	\$35,722	20	11	\$1,786	\$16,074

2025 PHYSICAL RESERVE ANALYSIS

Promenade at Boca Pointe Condo Association No. 3, Inc.

Reserve Category	Component Items	Quantity Units	Unit Cost \$	Replacement Cost \$	Useful Life	Remaining Life	Normal Annual Contribution	Current Reserve Requirement
	b - note: monies from reserves can be used at anytime for roofing related repairs							
	6 - Roofing Other Subtotal			\$35,722			\$1,786	\$16,074
A - Roofing Total				\$1,645,704	40	36	\$69,745	\$588,585

2025 PHYSICAL RESERVE ANALYSIS

Promenade at Boca Pointe Condo Association No. 3, Inc.

Reserve Category	Component Items	Quantity Units	Unit Cost \$	Replacement Cost \$	Useful Life	Remaining Life	Normal Annual Contribution	Current Reserve Requirement
B - Painting/Waterproofing								
	1 - Condo Bldg. Paint Exterior							
	a - paint condo 7201-7209 exteriors	33,789	1.84	\$62,172	10	10	\$6,217	\$0
	b - paint condo 7217-7225 exteriors	33,693	1.84	\$61,995	10	10	\$6,200	\$0
	c - paint condo 7233 exteriors	17,924	1.84	\$32,980	10	10	\$3,298	\$0
	1 - Condo Bldg. Paint Exterior Subtotal			\$157,147			\$15,715	\$0
	2 - Paint Carport Walls							
	a - paint tiled carport walls/pillars/ceilings - 3	12,396	1.84	\$22,809	10	10	\$2,281	\$0
	b - paint canopy top carport walls/pillars - 7	4,584	1.84	\$8,435	10	10	\$844	\$0
	2 - Paint Carport Walls Subtotal			\$31,244			\$3,125	\$0
	3 - Paint Other Walls							
	a - paint entry arch & monument	684	1.84	\$1,259	10	10	\$126	\$0
	b - paint waterfall walls	155	1.84	\$285	10	10	\$29	\$0
	3 - Paint Other Walls Subtotal			\$1,544			\$155	\$0
	4 - Paint Stamped Concrete Drive							
	a - paint stamped concrete drive (sf)	21,298	2.50	\$53,245	7	7	\$7,606	\$0
	4 - Paint Stamped Concrete Drive Subtotal			\$53,245			\$7,606	\$0
	5 - Condo Bldg. Caulking							
	a - major bldg. caulking (lf)	17,166	4.45	\$76,389	20	20	\$3,819	\$0
	5 - Condo Bldg. Caulking Subtotal			\$76,389			\$3,819	\$0
	B - Painting/Waterproofing Total			\$319,569	20	20	\$30,420	\$0

2025 PHYSICAL RESERVE ANALYSIS

Promenade at Boca Pointe Condo Association No. 3, Inc.

Reserve Category	Component Items	Quantity Units	Unit Cost \$	Replacement Cost \$	Useful Life	Remaining Life	Normal Annual Contribution	Current Reserve Requirement
C - Structure/Restoration								
	01 - Condo Bldg. Repairs & Restoration							
	a - condo bldg. walls R&R	85,406	2.50	\$213,515	10	10	\$21,352	\$0
	b - condo bldg. balcony decks R&R	7,770	40.80	\$317,016	30	30	\$10,567	\$0
	c - condo bldg. 7217-C terrace deck R&R 22	1,876	40.80	\$76,541	30	26	\$2,551	\$10,204
	f - note: if the actual final costs exceeds the cost stated on this report, we recommend special assessing the difference							
	01 - Condo Bldg. Repairs & Restoration Subtotal			\$607,072			\$34,470	\$10,204
	02 - Restoration Notes							
	a - note: R&R - Repair / Replace / Restore							
	b - note: restoration project(s) can occur sooner then the remaining life stated in this report - special assessments will be required							
	c - note: restoration costs in Florida can vary depending upon location, weather, and past workmanship and materials used							
	d - note: this study includes an estimate of restoration costs scheduled around the association's future paint cycles							
	e - note: keeping up with the scheduled paint cycle can help reduce long term restoration cost							
	f - note: restoration costs does not include structural failing items and or neglect of restoration projects							
	g - note: depending upon your location, we recommend hiring the services of a structural engineer every 1 to 3 paint cycles							
	h - note: though we have provided a budgeting costs for restoration, the actual costs can be much higher							
	i - note: we recommend special assessing the difference if the costs stated on this report is lower then the actual restoration costs							
	j - note: please note that a reserve study is not an inspection report for structural and or mechanical items							
	k - note: a remaining life of 1 year related to concrete/structural work, can imply the work needs to be completed in the current year "0"							
	02 - Restoration Notes Subtotal							
	03 - Waterproofing							
	a - waterproof condo balcony decks	7,770	40.80	\$317,016	30	30	\$10,567	\$0
	b - condo bldg. 7217-C terrace deck R&R 22	1,876	13.65	\$25,607	30	26	\$854	\$3,416
	f - note: all terrace deck coverings such as tiles is the responsibility of the individual unit owner on that floor							
	03 - Waterproofing Subtotal			\$342,623			\$11,421	\$3,416
	04 - Balcony Railings/Enclosures (If)							
	a - balcony railings/metal enclosures (If)	2,611	226.27	\$590,791	45	45	\$13,129	\$0
	04 - Balcony Railings/Enclosures (If) Subtotal			\$590,791			\$13,129	\$0
C - Structure/Restoration Total				\$1,540,486	45	45	\$59,020	\$13,620

2025 PHYSICAL RESERVE ANALYSIS

Promenade at Boca Pointe Condo Association No. 3, Inc.

Reserve Category	Component Items	Quantity Units	Unit Cost \$	Replacement Cost \$	Useful Life	Remaining Life	Normal Annual Contribution	Current Reserve Requirement
D - Fire Protection Systems								
	01 - Fire Pump							
	a - 40hp fire pump 21	1	59,800.00	\$59,800	35	30	\$1,709	\$8,545
	b - fire pump controller	1	12,900.00	\$12,900	35	30	\$369	\$1,845
	c - fire pump 1.5hp jockey pump 19	1	5,400.00	\$5,400	15	8	\$360	\$2,520
	d - fire pump transfer switch	1	16,500.00	\$16,500	35	8	\$471	\$12,717
	01 - Fire Pump Subtotal			\$94,600			\$2,909	\$25,627
	02 - Fire System Updates							
	a - fire system updates R&R 15	78	1,650.00	\$128,700	25	14	\$5,148	\$56,628
	02 - Fire System Updates Subtotal			\$128,700			\$5,148	\$56,628
	03 - Bldg. Fire Sprinkler System R&R							
	a - bldg. fire sprinkler system R&R	5	8,500.00	\$42,500	20	10	\$2,125	\$21,250
	b - rear trash room fire sprinkler - 5 R&R (sf)	650	35.00	\$22,750	20	10	\$1,138	\$11,380
	03 - Bldg. Fire Sprinkler System R&R Subtotal			\$65,250			\$3,263	\$32,630
	04 - Fire Standpipes							
	a - bldg. fire standpipes - 5 (floors)	45	3,500.00	\$157,500	40	20	\$3,938	\$78,760
	b - ground standpipes	2	6,800.00	\$13,600	30	15	\$453	\$6,795
	04 - Fire Standpipes Subtotal			\$171,100			\$4,391	\$85,555
	05 - Fire System Notes							
	a - note: fire system R&R includes fire panels, pull stations, sirens, smoke detectors, etc. and minor wiring replacements							
	b - note: fire system R&R remaining life has been average - monies can be used at anytime for related component replacements							
	c - note: fire sprinkler R&R includes sprinkler heads and minor sprinkler line replacements - does not include system replacement							
	d - note: if the association is planning on a major overhaul/upgrade of their fire system, the amounts should be special assessed							
	e - note: not conducting inspections and updating the fire protection systems in a timely manner can lead to physical harm and or death							
	05 - Fire System Notes Subtotal							
D - Fire Protection Systems Total				\$459,650	40	30	\$15,711	\$200,440

2025 PHYSICAL RESERVE ANALYSIS

Promenade at Boca Pointe Condo Association No. 3, Inc.

Reserve Category	Component Items	Quantity Units	Unit Cost \$	Replacement Cost \$	Useful Life	Remaining Life	Normal Annual Contribution	Current Reserve Requirement
E - Plumbing								
	01 - Domestic Water Station							
	a - water station 7.5hp motor	2	6,800.00	\$13,600	15	7	\$907	\$7,256
	b - water station controller	1	15,300.00	\$15,300	25	7	\$612	\$11,016
	c - water station VFD 20	1	3,890.00	\$3,890	15	9	\$259	\$1,554
	d - water station piping	1	23,500.00	\$23,500	40	21	\$588	\$11,172
	01 - Domestic Water Station Subtotal			\$56,290			\$2,366	\$30,998
	02 - Plumbing Updates							
	a - plumbing updates & misc.	78	5,200.00	\$405,600	55	15	\$7,375	\$295,000
	02 - Plumbing Updates Subtotal			\$405,600			\$7,375	\$295,000
	03 - Plumbing Backflow							
	a - plumbing backflow	1	25,500.00	\$25,500	30	15	\$850	\$12,750
	b - note: the plumbing backflow is located adjacent to building E							
	03 - Plumbing Backflow Subtotal			\$25,500			\$850	\$12,750
	04 - Plumbing Notes							
	a - note: it is the responsibility of the association to hire the services of a MEP (mechanical/electrical/plumbing) engineer							
	b - note: a MEP engineer inspection should be ordered at least once every 10 years to evaluate the integrity of the plumbing system(s)							
	c - note: the interior lining of the plumbing pipes cannot be inspected for the integrity of the plumbing pipes							
	d - note: we may/may not have visually inspected the plumbing system, this report does not consider code violations/integrity of the plumbing pipes							
	e - note: association should provide a copy of the MEP report with any work orders completed on the plumbing system(s) to your reserve specialist							
	f - note: reactive versus proactive plumbing repairs & replacements may considerably increase the costs stated in this section							
	04 - Plumbing Notes Subtotal							
E - Plumbing Total				\$487,390	55	21	\$10,591	\$338,748

2025 PHYSICAL RESERVE ANALYSIS

Promenade at Boca Pointe Condo Association No. 3, Inc.

Reserve Category	Component Items	Quantity Units	Unit Cost \$	Replacement Cost \$	Useful Life	Remaining Life	Normal Annual Contribution	Current Reserve Requirement
F - Electrical Systems								
	01 - Electrical Updates							
	a - electrical updates & misc.	78	1,250.00	\$97,500	45	15	\$2,167	\$65,010
	01 - Electrical Updates Subtotal			\$97,500			\$2,167	\$65,010
	02 - Bldg. C/D Electrical Panels							
	a - bldg. C/D meter disconnect panel	1	10,900.00	\$10,900	45	9	\$242	\$8,712
	b - bldg. C/D tap box panel	1	12,800.00	\$12,800	45	9	\$284	\$10,224
	c - bldg. C/D common electrical panel	1	4,800.00	\$4,800	45	9	\$107	\$3,852
	02 - Bldg. C/D Electrical Panels Subtotal			\$28,500			\$633	\$22,788
	03 - Bldg. E Electrical Panels							
	a - bldg. E meter disconnect panel	1	10,900.00	\$10,900	45	9	\$242	\$8,712
	b - bldg. E emergency panel	1	5,400.00	\$5,400	45	9	\$120	\$4,320
	c - bldg. E house common panel #3	1	3,800.00	\$3,800	45	9	\$84	\$3,024
	03 - Bldg. E Electrical Panels Subtotal			\$20,100			\$446	\$16,056
	04 - Bldg. A/B Electrical Panels							
	a - bldg. A/B meter disconnect panel	2	10,900.00	\$21,800	45	9	\$484	\$17,424
	b - bldg. A/B emergency electrical panel	1	6,800.00	\$6,800	45	9	\$151	\$5,436
	c - bldg. A/B common house panel #1	1	3,800.00	\$3,800	45	9	\$84	\$3,024
	04 - Bldg. A/B Electrical Panels Subtotal			\$32,400			\$719	\$25,884
	05 - Generator Room Electrical Panels							
	a - generator room disconnect panel	1	18,500.00	\$18,500	45	9	\$411	\$14,796
	b - generator room emergency panel	2	5,400.00	\$10,800	45	9	\$240	\$8,640
	c - generator fire disconnect panel	1	2,800.00	\$2,800	45	9	\$62	\$2,232
	d - generator room mechanical disconnect	1	22,500.00	\$22,500	45	9	\$500	\$18,000
	05 - Generator Room Electrical Panels Subtotal			\$54,600			\$1,213	\$43,668
	06 - Electrical Notes							
	b - note: a MEP engineer inspection should be ordered at least once every 10 years to evaluate the integrity of the electrical system(s)							
	c - note: though we have visually inspected the electrical system, this report does not consider code violations/integrity of the electrical panels/wiring							
	d - note: association should provide a copy of the MEP report with any work orders completed on the electrical system(s) to your reserve specialist							
	e - note: faulty electrical systems can cause a fire and lead to physical harm and or death							
	06 - Electrical Notes Subtotal							
	06 - Elevator Room Electrical Panels							
	a - elevator room disconnect panels 24	5	4,800.00	\$24,000	30	28	\$800	\$1,600

2025 PHYSICAL RESERVE ANALYSIS

Promenade at Boca Pointe Condo Association No. 3, Inc.

Reserve Category	Component Items	Quantity Units	Unit Cost \$	Replacement Cost \$	Useful Life	Remaining Life	Normal Annual Contribution	Current Reserve Requirement
	b - elevator room common disconnect panels	10	1,200.00	\$12,000	30	28	\$400	\$800
	06 - Elevator Room Electrical Panels Subtotal			\$36,000			\$1,200	\$2,400
	07 - Electrical Notes							
	a - note: it is the responsibility of the association to hire the services of a MEP (mechanical/electrical/plumbing) engineer							
	07 - Electrical Notes Subtotal							
F - Electrical Systems Total				\$269,100	45	28	\$6,378	\$175,806

2025 PHYSICAL RESERVE ANALYSIS

Promenade at Boca Pointe Condo Association No. 3, Inc.

Reserve Category	Component Items	Quantity Units	Unit Cost \$	Replacement Cost \$	Useful Life	Remaining Life	Normal Annual Contribution	Current Reserve Requirement
G - Windows/Doors								
	01 - Common Glass Doors							
	a - entry single glass doors 21	5	5,800.00	\$29,000	30	1	\$967	\$28,043
	b - entry single glass door/windows - 5 (sf) 21	130	110.00	\$14,300	30	1	\$477	\$13,833
	c - bldg. B terrace double glass door	1	12,500.00	\$12,500	30	15	\$417	\$6,255
	d - bldg. C terrace double glass door	1	12,500.00	\$12,500	30	15	\$417	\$6,255
	01 - Common Glass Doors Subtotal			\$68,300			\$2,278	\$54,386
	02 - Rooftop Doors							
	a - stairwell rooftop single door/frames 21	5	2,750.00	\$13,750	30	25	\$458	\$2,290
	02 - Rooftop Doors Subtotal			\$13,750			\$458	\$2,290
	03 - Stairwell Doors							
	a - roof access stairwell #1 single door/frames	60	2,750.00	\$165,000	50	10	\$3,300	\$132,000
	b - stairwell #2 single door/frames	50	2,750.00	\$137,500	50	10	\$2,750	\$110,000
	c - stairwell #2 1st level single door/frames	5	2,750.00	\$13,750	30	10	\$458	\$9,160
	d - note: there are 2 stairwell cases for each of the A through E building stacks							
	03 - Stairwell Doors Subtotal			\$316,250			\$6,508	\$251,160
	04 - Trash Room Doors							
	a - rear trash room double door/frames	5	4,800.00	\$24,000	25	10	\$960	\$14,400
	04 - Trash Room Doors Subtotal			\$24,000			\$960	\$14,400
	05 - Mechanical/Access Doors							
	a - elevator room single door/frames 24	4	2,750.00	\$11,000	40	38	\$275	\$550
	b - elevator room D single door/frame 24	1	2,750.00	\$2,750	35	28	\$79	\$553
	c - rear bldg. access single door/frames	5	2,750.00	\$13,750	35	15	\$393	\$7,860
	d - rear A/B/C storage room single door/frames	3	2,750.00	\$8,250	35	10	\$236	\$5,900
	e - rear bldg. C/D electrical single door/frames	1	2,750.00	\$2,750	35	15	\$79	\$1,580
	f - rear bldg. generator single door/frame	1	2,750.00	\$2,750	35	15	\$79	\$1,580
	g - rear bldg. fire pump single door/frame	1	2,750.00	\$2,750	35	10	\$79	\$1,975
	h - rear bldg. fire panel single door/frame	1	2,750.00	\$2,750	35	10	\$79	\$1,975
	i - front bldg. fire panel single door/frame	1	2,750.00	\$2,750	35	10	\$79	\$1,975
	j - rear bldg. meter room single door/frame	1	2,750.00	\$2,750	35	15	\$79	\$1,580
	k - front bldg. A/B meter single door/frame	1	2,750.00	\$2,750	35	15	\$79	\$1,580
	05 - Mechanical/Access Doors Subtotal			\$55,000			\$1,536	\$27,108
G - Windows/Doors Total				\$477,300	50	38	\$11,740	\$349,344

2025 PHYSICAL RESERVE ANALYSIS

Promenade at Boca Pointe Condo Association No. 3, Inc.

Reserve Category	Component Items	Quantity Units	Unit Cost \$	Replacement Cost \$	Useful Life	Remaining Life	Normal Annual Contribution	Current Reserve Requirement
Grand Total				\$5,199,199	55	45	\$203,605	\$1,666,543

RESERVE FUNDING FINANCIAL ANALYSIS

Promenade at Boca Pointe Condo Association No. 3, Inc.

		1/31/26				FUND			
		RESERVE	FULLY FUNDED BALANCE /			OVERAGE			
		BALANCE	TOTAL ACCRUED DEPRECIATION			(DEFICIT)		Minimum Threshold Reserve	
								Fund Balance:	
		\$354,557	\$1,666,543			(\$1,311,986)		\$150,000	
			Financial year runs February 1st through January 31st						
		BEGINNING							ENDING
		RESERVE		Minus		Plus	Plus	Equals	RESERVE
		FUND		YEARLY		NORMAL ANNUAL	AMORTIZED	TOTAL YEARLY	FUND
YEAR		BALANCE	COMPONENT EXPENSE ITEMS BY YEAR	EXPENSE		CONTRIBUTION	DEFICIT	CONTRIBUTION	BALANCE
					0				
					months				
2025	0	354,557		0	remaining	0	0	0	\$354,557
2026	1	354,557	a - entry single glass doors 21 b - entry single glass door/windows - 5 (sf) 21	43,300		203,605	0	203,605	\$514,862
2027	2	514,862		0		203,605	0	203,605	\$718,467
2028	3	718,467		0		203,605	0	203,605	\$922,072
2029	4	922,072		0		203,605	0	203,605	\$1,125,677
2030	5	1,125,677		0		203,605	0	203,605	\$1,329,282
2031	6	1,329,282		0		203,605	0	203,605	\$1,532,887
2032	7	1,532,887	a - paint stamped concrete drive (sf) a - water station 7.5hp motor b - water station controller	82,145		203,605	0	203,605	\$1,654,347
2033	8	1,654,347	c - fire pump 1.5hp jockey pump 19 d - fire pump transfer switch	21,900		203,605	0	203,605	\$1,836,052
2034	9	1,836,052	a - condo 7201-7209 bldg. tile roof b - condo 7201-7209 portico & trash tile roof c - condo 7217-7225 bldg. tile roof d - condo 7217-7225 portico & trash tile roof e - condo 7233 bldg. tile roof f - condo 7233 portico & trash tile roof a - southeast carport tile roof b - southwest carport tile roof c - water station VFD 20 a - bldg. C/D meter disconnect panel b - bldg. C/D tap box panel c - bldg. C/D common electrical panel a - bldg. E meter disconnect panel b - bldg. E emergency panel c - bldg. E house common panel #3 a - bldg. A/B meter disconnect panel b - bldg. A/B emergency electrical panel c - bldg. A/B common house panel #1 a - generator room disconnect panel b - generator room emergency panel c - generator fire disconnect panel d - generator room mechanical disconnect	718,458		203,605	0	203,605	\$1,321,199
2035	10	1,321,199	a - seal tile roofing systems a - paint condo 7201-7209 exteriors b - paint condo 7217-7225 exteriors c - paint condo 7233 exteriors a - paint tiled carport walls/pillars/ceilings - 3 b - paint canopy top carport walls/pillars - 7 a - paint entry arch & monument b - paint waterfall walls a - condo bldg. walls R&R a - bldg. fire sprinkler system R&R b - rear trash room fire sprinkler - 5 R&R (sf) a - roof access stairwell #1 single door/frames b - stairwell #2 single door/frames c - stairwell #2 1st level single door/frames a - rear trash room double door/frames d - rear A/B/C storage room single door/frames g - rear bldg. fire pump single door/frame h - rear bldg. fire panel single door/frame i - front bldg. fire panel single door/frame	893,966		203,605	0	203,605	\$630,838
2036	11	630,838	a - roofing repairs & misc.	35,722		203,605	0	203,605	\$798,721

		BEGINNING RESERVE FUND		Minus YEARLY EXPENSE		Plus NORMAL ANNUAL CONTRIBUTION	Plus AMORTIZED DEFICIT	Equals TOTAL YEARLY CONTRIBUTION	ENDING RESERVE FUND BALANCE
YEAR		BALANCE	COMPONENT EXPENSE ITEMS BY YEAR	EXPENSE		CONTRIBUTION	DEFICIT	CONTRIBUTION	BALANCE
2037	12	798,721		0		203,605	0	203,605	\$1,002,326
2038	13	1,002,326		0		203,605	0	203,605	\$1,205,931
2039	14	1,205,931	a - paint stamped concrete drive (sf) a - fire system updates R&R 15	181,945		203,605	0	203,605	\$1,227,591
2040	15	1,227,591	b - ground standpipes a - plumbing updates & misc. a - plumbing backflow a - electrical updates & misc. c - bldg. B terrace double glass door d - bldg. C terrace double glass door c - rear bldg. access single door/frames e - rear bldg. C/D electrical single door/frames f - rear bldg. generator single door/frame j - rear bldg. meter room single door/frame k - front bldg. A/B meter single door/frame	591,950		203,605	0	203,605	\$839,246
2041	16	839,246	a - condo 7201-7209 bldg. flat roof 22 b - condo 7201-7209 portico flat roof 22 c - condo 7217-7225 bldg. flat roof 22 d - condo 7217-7225 portico flat roof 22 e - condo 7233 bldg. flat roof 22 f - condo 7233 portico flat roof 22 g - utility connecting bldg. flat roof 22	709,778		203,605	0	203,605	\$333,073
2042	17	333,073		0		203,605	0	203,605	\$536,678
2043	18	536,678		0		203,605	0	203,605	\$740,283
2044	19	740,283		0		203,605	0	203,605	\$943,888
2045	20	943,888	a - seal tile roofing systems a - paint condo 7201-7209 exteriors b - paint condo 7217-7225 exteriors c - paint condo 7233 exteriors a - paint tiled carport walls/pillars/ceilings - 3 b - paint canopy top carport walls/pillars - 7 a - paint entry arch & monument b - paint waterfall walls a - major bldg. caulking (lf) a - condo bldg. walls R&R a - bldg. fire standpipes - 5 (floors)	705,855		203,605	0	203,605	\$441,638
2046	21	441,638	a - paint stamped concrete drive (sf) d - water station piping	76,745		203,605	0	203,605	\$568,498
2047	22	568,498	a - water station 7.5hp motor	13,600		203,605	0	203,605	\$758,503
2048	23	758,503	c - fire pump 1.5hp jockey pump 19	5,400		203,605	0	203,605	\$956,708
2049	24	956,708	c - water station VFD 20	3,890		203,605	0	203,605	\$1,156,423
2050	25	1,156,423	a - stairwell rooftop single door/frames 21	13,750		203,605	0	203,605	\$1,346,278
2051	26	1,346,278	c - condo bldg. 7217-C terrace deck R&R 22 b - condo bldg. 7217-C terrace deck R&R 22	102,148		203,605	0	203,605	\$1,447,735
2052	27	1,447,735		0		203,605	0	203,605	\$1,651,340
2053	28	1,651,340	a - paint stamped concrete drive (sf) a - elevator room disconnect panels 24 b - elevator room common disconnect panels b - elevator room D single door/frame 24	91,995		203,605	0	203,605	\$1,762,950
2054	29	1,762,950		0		203,605	0	203,605	\$1,966,555
2055	30	1,966,555	a - seal tile roofing systems a - paint condo 7201-7209 exteriors b - paint condo 7217-7225 exteriors c - paint condo 7233 exteriors a - paint tiled carport walls/pillars/ceilings - 3 b - paint canopy top carport walls/pillars - 7 a - paint entry arch & monument b - paint waterfall walls a - condo bldg. walls R&R b - condo bldg. balcony decks R&R a - waterproof condo balcony decks a - 40hp fire pump 21 b - fire pump controller a - bldg. fire sprinkler system R&R b - rear trash room fire sprinkler - 5 R&R (sf)	1,243,948		203,605	0	203,605	\$926,212
In this reserve study, deficits beyond 25 years are not considered or amortized into previous years									
END			THIRTY YEAR REPAIR / REPLACEMENT PROJECTIONS						



Condo Bldg. Exterior's

Promenade at Boca Pointe Condo. Assoc. No. 3, Inc.



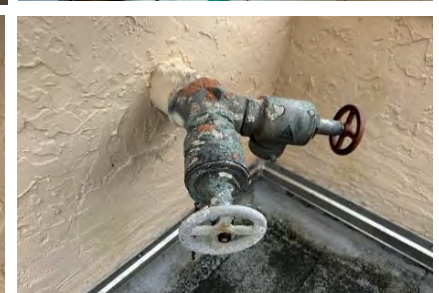
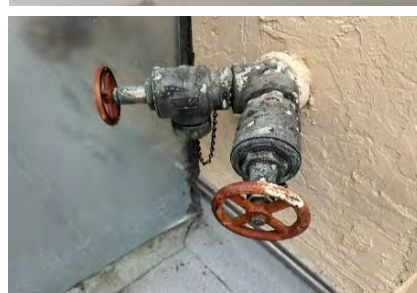
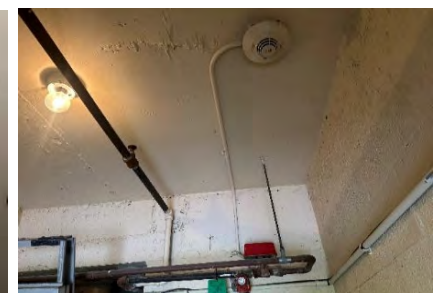
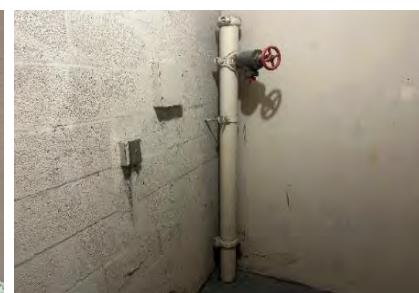
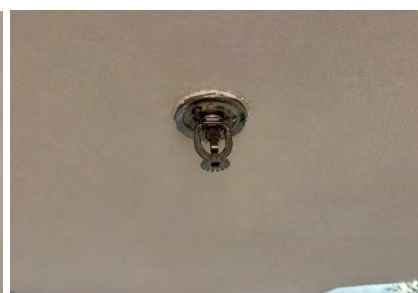
Condo Bldg. Exterior's

Promenade at Boca Pointe Condo. Assoc. No. 3, Inc.



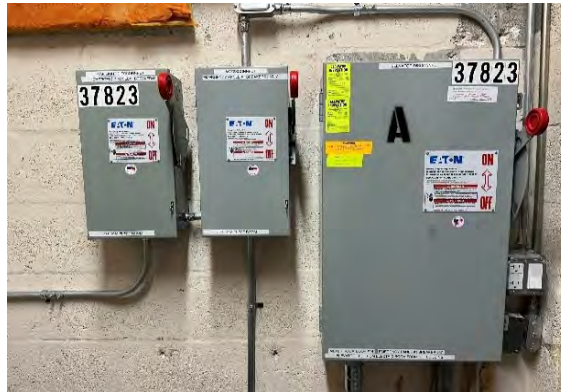
Condo Bldg. Roofing Systems and Terrace Decks

Promenade at Boca Pointe Condo. Assoc. No. 3, Inc.



Fire Protection Systems

Promenade at Boca Pointe Condo. Assoc. No. 3, Inc.



Electrical Panels

Promenade at Boca Pointe Condo. Assoc. No. 3, Inc.



Domestic Water Station / Backflow / Plumbing Stacks / Exterior Doors

Promenade at Boca Pointe Condo. Assoc. No. 3, Inc.

Dear Promenade III Owner

Enclosed is the Promenade at Boca Pointe Condominium Association No. 3, Inc., approved Fiscal 2025 Budget.

Also Funding Reserve Ballot is included. Please return your ballot to Promenade Management Office by 12:00 pm Dec 16, 2024 (if voting by paper ballot). Voting is also conducted electronically.

The Fiscal 2025 Budget was approved during a Board of Director Budget Meeting held on Dec 2, 2024.

The following Revenue and Quarterly fees were approved along with the included budget details.

2025 Revenue	2025 Quarterly Fees
\$1,014,047	\$3,250

Quarterly fees are paid on Feb 1, 2025 – May 1, 2025 – Aug 1, 2025 – Nov 1, 2025.

Late fees and Interest are applied if not posted in our bank account by the 15th of each pay month.

Sincerely,
Board of Directors

Budget 2025	
Expense	\$1,014,047
07000 - GENERAL & ADMINISTRATIVE EXPENSES	\$154,834
07001 - Audit Fees	\$4,500
07002 - Professional	\$800
07003 - Legal Fees	\$2,500
07004 - Bad Debt	\$0
07005 - Licenses, Taxes, Fees	\$1,000
07006 - Office Expenses	\$500
07007 - Postage / Printing	\$750
07011 - Accounting Services	\$11,400
07012 - Consulting Fees	\$1,000
07013 - Digital Subscriptions	\$1,500
07014 - Boca Pointe Comm Ass'n Charges	\$130,884
07100 - INSURANCE EXPENSES	\$355,000
07110 - Insurance	\$355,000
07300 - CONTRACT SERVICES EXPENSES	\$52,450
07302 - HVAC	\$1,400
07303 - Elevator	\$12,000
07305 - Fire Alarm Monitoring	\$1,250
07307 - Generator	\$2,500
07308 - Alarm Services	\$10,000
07311 - Landscape Maintenance	\$15,500
07313 - Tree Trimming	\$6,800
07314 - Pest Control	\$3,000
07400 - UTILITIES EXPENSES	\$126,600
07401 - Electricity	\$28,000
07402 - Water & Sewer	\$45,000
07403 - Telephone	\$6,100
07406 - Cable TV	\$46,000
07407 - Waste Removal	\$1,500
07500 - REPAIRS & MAINTENANCE EXPENSES	\$55,000
07502 - Plumbing	\$3,000
07503 - General Repairs [Units]	\$5,000
07505 - Building Repairs & Maintenance	\$10,000
07508 - Roof	\$2,000
07509 - HVAC System	\$2,000
07510 - Generator	\$1,500
07511 - Irrigation / Sprinkler	\$1,000
07512 - Landscape	\$15,000
07514 - Elevator	\$2,500
07515 - General Supplies	\$1,000
07519 - Fire Equipment	\$7,500
07523 - Pest/Rodent Control Extra	\$500
07900 - RESERVE EXPENSES	\$270,163
07901 - Reserves Transfer	\$270,163
Quarterly Payment	\$3,250
2025 Revenue (4 payments, @ 78 units)	\$1,014,047

ENUMERATE

ENUMERATE FINANCIAL SERVICES

3363 W. Commercial Blvd. Suite 105, Ft. Lauderdale, FL 33309 Office (954) 284-3080 Fax (954) 284-3081
Condominium / Homeowner Association / Co-Operative Accounting & Financial Management

Board of Directors
Promenade at Boca Pointe III Condominium Association
Boca Raton, FL

The accompanying financial statements of Promenade at Boca Pointe III Condominium Association as of and for the period ended April 30, 2025, were not subjected to an audit, review, or compilation engagement by me and, accordingly, I do not express an opinion, a conclusion, nor provide any assurance on them. Substantially all disclosures required by accounting principles generally accepted in the United States of America are not included.

The monthly financial statements for the period listed above include:

1. Balance Sheet
2. Statement of Revenue & Expenses
3. A/R Delinquency Report
4. Maintenance Prepayments
5. Accrued & Prepaid Expense Report
6. Bank Reconciliations and Statements

Key Financial Metrics for the Period

1. Cash on hand as of the period reporting is approx.:
 - a. Operating \$188k
 - b. Reserves \$400k
 - c. Special Assessment \$124k
2. Actual YTD gain/(Loss) is approx. \$8k as of this period.
3. Total Accounts Receivable is approx. \$3k.
4. Association financed their annual insurance premium with First Insurance Funding. Balance due as of this period is approx. \$218k. [GL2501]
5. Association entered a loan facility with Valley Bank for \$800,000 for replacement of its roof at a fixed annual rate of 3.5%. The line of credit was converted to a term loan in the amount of \$441,364 in April 2022. Monthly payments of principal and interest totaling \$7,372 will be made for a period of 60 months. The Loan Balance due is approx. \$147k. [GL3106].
6. Association entered a loan facility with Valley National Bank for \$925,000. Based on a final review of projected costs, the Association plans to borrow up to \$600,000 of the \$925,000 loan facility to finance the elevator modernization project. The term of the loan is 72 months (12 month Line of Credit, 60 month Term Loan) at a fixed annual interest rate of 5.85%. The Loan balance due is approx. \$196k. [3131]

NOTES THIS PERIOD

NOTES THIS FISCAL YEAR:

1. November 5, 2021 - Notice and Disclosure of Special Assessment – Roof Replacement, Both the Bank Loan from Valley National Bank and Special Assessment related to the Roof Replacement were Approved at the Special Meeting of the Board of Directors. Bank Loan - The terms of the bank loan, as approved, are as Principal Amount of Loan - \$800,000, Per unit \$10,256. Payment financed over 28 quarters (7 Years)

ENUMERATE

ENUMERATE FINANCIAL SERVICES

3363 W. Commercial Blvd. Suite 105, Ft. Lauderdale, FL 33309 Office (954) 284-3080 Fax (954) 284-3081
Condominium / Homeowner Association / Co-Operative Accounting & Financial Management

2. On 12/12/22, the Board passed a \$600,000 special assessment (SA2) for elevator modernization. Unit Owners were given the option to pay in full (\$7,692) or over 20 quarters at a fixed annual interest rate of 5.85% (\$446/unit/quarter).
3. Comcast Cable Incentive – Association received \$9,750 from Comcast Cable concurrent with renewal of a five-year contract, 1/1/21-12/31/25. These funds have been recorded GL2041 Deferred Revenue and are being recognized equally over the 60-month contract term GL4072 Comcast Cable Incentive.

Vishnu Sharma, CPA

Enumerate Financial Services

Ft. Lauderdale, FL
May 8, 2025

Promenade At Boca Pointe III CAI

FUND BALANCE SHEET

As of: 04/30/2025

Assets

Account	Operating	Reserves	Special Assessment	Total
Cash				
01030 Valley Oper[1213]	\$53,398.54	\$0.00	\$0.00	\$53,398.54
01031 Valley Oper ICS[213]	\$135,033.55	\$0.00	\$0.00	\$135,033.55
01032 Valley Rsv MM[2045]	\$0.00	\$185,257.49	\$0.00	\$185,257.49
01033 Valley Rsv ICS[045]	\$0.00	\$215,342.31	\$0.00	\$215,342.31
01034 Valley SA[4405]	\$0.00	\$0.00	\$5,000.20	\$5,000.20
01035 Valley SA ICS[405]	\$0.00	\$0.00	\$9,345.33	\$9,345.33
01036 Valley SA#2 Elev[2021]	\$0.00	\$0.00	\$5,000.20	\$5,000.20
01037 Valley SA ICS[021]	\$0.00	\$0.00	\$105,062.26	\$105,062.26
Cash Total	\$188,432.09	\$400,599.80	\$124,407.99	\$713,439.88
Accounts Receivable				
01100 AR: Maintenance Fees	\$3,250.00	\$0.00	\$0.00	\$3,250.00
01111 AR: SA2021 Roof to be Billed	\$0.00	\$0.00	\$139,809.49	\$139,809.49
01112 AR: SA2 - Elevator	\$0.00	\$0.00	\$27.24	\$27.24
01113 AR: SA2 - Elevator to be Billed	\$0.00	\$0.00	\$94,900.20	\$94,900.20
01156 AR: Late / Legal Fee Income	\$197.66	\$0.00	\$0.00	\$197.66
01170 AR: Legal Fees PB1 & PB2	\$0.00	\$1,994.00	\$0.00	\$1,994.00
Accounts Receivable Total	\$3,447.66	\$1,994.00	\$234,736.93	\$240,178.59
Other Assets				
01200 Prepaid Insurance	\$323,257.64	\$0.00	\$0.00	\$323,257.64
01210 Prepaid Expenses	\$1,480.14	\$0.00	\$0.00	\$1,480.14
01304 Due fr S/A to Operating	\$1,043.49	\$0.00	\$0.00	\$1,043.49
Other Assets Total	\$325,781.27	\$0.00	\$0.00	\$325,781.27
Total Assets:	\$517,661.02	\$402,593.80	\$359,144.92	\$1,279,399.74

Liabilities

Account	Operating	Reserves	Special Assessment	Total
Liability				
02000 Accounts Payable	\$1,517.96	\$0.00	\$0.00	\$1,517.96
02003 Accounts Payable Clearing	\$3,784.44	\$0.00	\$0.00	\$3,784.44
02005 Accrued Expenses	\$9,094.33	\$0.00	\$0.00	\$9,094.33
02006 Accrued Expenses: Reserves	\$0.00	\$4,271.37	\$0.00	\$4,271.37
02009 Accrued Expenses: SA2 - Elevator	\$0.00	\$0.00	\$2,742.00	\$2,742.00
02041 Deferred Rev: Comcast Cable	\$1,300.00	\$0.00	\$0.00	\$1,300.00
02060 Prepaid Maintenance Fees	\$57,176.41	\$0.00	\$0.00	\$57,176.41
02064 Due to Owners - Other	\$3,000.00	\$0.00	\$0.00	\$3,000.00
02104 Due to Operating fr S/A	\$0.00	\$0.00	\$1,043.49	\$1,043.49
02501 Loan Payable: Insurance	\$217,790.51	\$0.00	\$0.00	\$217,790.51
Liability Total	\$293,663.65	\$4,271.37	\$3,785.49	\$301,720.51

Account	Operating	Reserves	Special Assessment	Total
Total Liabilities:	\$293,663.65	\$4,271.37	\$3,785.49	\$301,720.51

Equity

Account	Operating	Reserves	Special Assessment	Total
Reserves				
03000 Reserve Pooled Fund	\$0.00	\$655,917.81	\$0.00	\$655,917.81
03001 Resv - Concrete Restoration	\$0.00	(\$32,277.51)	\$0.00	(\$32,277.51)
03002 Resv - Roofs	\$0.00	(\$10,600.00)	\$0.00	(\$10,600.00)
03003 Resv - Elevator	\$0.00	(\$7,594.50)	\$0.00	(\$7,594.50)
03004 Resv - Lighting	\$0.00	(\$1,389.72)	\$0.00	(\$1,389.72)
03005 Resv - General	\$0.00	(\$118,299.88)	\$0.00	(\$118,299.88)
03006 Resv - Fire/Sprinkler Sys	\$0.00	(\$35,412.50)	\$0.00	(\$35,412.50)
03010 Resv - Plumbing	\$0.00	(\$28,400.00)	\$0.00	(\$28,400.00)
03011 Resv - HVAC	\$0.00	(\$10,250.00)	\$0.00	(\$10,250.00)
03013 Resv - Fountain	\$0.00	(\$18,499.00)	\$0.00	(\$18,499.00)
03015 Resv - Interest Income	\$0.00	\$16,603.51	\$0.00	\$16,603.51
03016 Resv - Generator	\$0.00	(\$11,475.78)	\$0.00	(\$11,475.78)
Reserves Total	\$0.00	\$398,322.43	\$0.00	\$398,322.43

SA #1 - Roof

03101 SA2021Roof-Income	\$0.00	\$0.00	\$800,000.00	\$800,000.00
03102 SA2021Roof-Owners Interest Income	\$0.00	\$0.00	\$168.21	\$168.21
03103 SA2021Roof-Bank Interest Income	\$0.00	\$0.00	\$7,378.97	\$7,378.97
03104 SA2021Roof-Transfer from Reserves	\$0.00	\$0.00	\$495,360.00	\$495,360.00
03106 SA2021Roof Loan Payable [2332]	\$0.00	\$0.00	\$147,233.61	\$147,233.61
03110 SA2021Roof Exp: Contractors	\$0.00	\$0.00	(\$987,676.30)	(\$987,676.30)
03117 SA2021Roof Exp: Accounting	\$0.00	\$0.00	(\$5,866.00)	(\$5,866.00)
03118 SA2021Roof Exp: Engineering	\$0.00	\$0.00	(\$23,459.51)	(\$23,459.51)
03119 SA2021Roof Exp: Legal	\$0.00	\$0.00	(\$13,343.90)	(\$13,343.90)
03120 SA2021Roof Exp: Loan Interest	\$0.00	\$0.00	(\$39,465.55)	(\$39,465.55)
03121 SA2021Roof Exp: Loan Closing Costs	\$0.00	\$0.00	(\$5,413.00)	(\$5,413.00)
03123 SA2021Roof Exp: Bank Fees	\$0.00	\$0.00	(\$20.54)	(\$20.54)
SA #1 - Roof Total	\$0.00	\$0.00	\$374,895.99	\$374,895.99

SA #2 - Elevator

03127 SA#2Elevator Income	\$0.00	\$0.00	\$600,000.00	\$600,000.00
03129 SA#2Elevator Bank Interest Income	\$0.00	\$0.00	\$433.91	\$433.91
03130 SA#2Elevator Transfer From Reserves	\$0.00	\$0.00	\$25,000.00	\$25,000.00
03131 SA#2Elevator Loan Payable Elevator [5642]	\$0.00	\$0.00	\$196,490.03	\$196,490.03
03132 SA#2Elevator Exp: Contractors	\$0.00	\$0.00	(\$772,989.64)	(\$772,989.64)
03133 SA#2Elevator Exp: Accounting	\$0.00	\$0.00	(\$4,930.00)	(\$4,930.00)
03134 SA#2Elevator Exp: Consultants	\$0.00	\$0.00	(\$34,367.50)	(\$34,367.50)
03135 SA#2Elevator Exp: Legal	\$0.00	\$0.00	(\$8,309.50)	(\$8,309.50)
03136 SA#2Elevator Exp: Loan Interest	\$0.00	\$0.00	(\$15,332.11)	(\$15,332.11)
03137 SA#2Elevator Exp: Loan Closing Costs	\$0.00	\$0.00	(\$5,531.75)	(\$5,531.75)
SA #2 - Elevator Total	\$0.00	\$0.00	(\$19,536.56)	(\$19,536.56)

Members Equity

Account	Operating	Reserves	Special Assessment	Total
03900 Operating Fund	\$226,809.31	\$0.00	\$0.00	\$226,809.31
03905 Prior Year Adjustment	(\$10,552.25)	\$0.00	\$0.00	(\$10,552.25)
Members Equity Total	\$216,257.06	\$0.00	\$0.00	\$216,257.06
Current Year Net Income/(Loss)	\$7,740.31	\$0.00	\$0.00	\$7,740.31
Total Equity:	\$223,997.37	\$398,322.43	\$355,359.43	\$977,679.23
Total Liabilities & Equity	\$517,661.02	\$402,593.80	\$359,144.92	\$1,279,399.74

Promenade At Boca Pointe III CAI

INCOME STATEMENT

Start: 04/01/2025 | End: 04/30/2025

Income

Account	Current			Year to Date			Yearly
	Actual	Budget	Variance	Actual	Budget	Variance	
Income							
04050 Maintenance Income	84,503.92	84,503.92	0.00	253,511.76	253,511.76	0.00	1,014,047.00
04061 Late Fee Interest	0.00	0.00	0.00	506.06	0.00	506.06	0.00
04062 Bank Interest Income	139.22	0.00	139.22	508.68	0.00	508.68	0.00
04063 Miscellaneous Income	4,000.00	0.00	4,000.00	4,000.00	0.00	4,000.00	0.00
04072 Comcast Cable Incentive	162.50	0.00	162.50	487.50	0.00	487.50	0.00
Income Total	88,805.64	84,503.92	4,301.72	259,014.00	253,511.76	5,502.24	1,014,047.00
Total Income	88,805.64	84,503.92	4,301.72	259,014.00	253,511.76	5,502.24	1,014,047.00

Expense

Account	Current			Year to Date			Yearly
	Actual	Budget	Variance	Actual	Budget	Variance	
General & Administrative							
07001 Audit Fees	0.00	375.00	375.00	0.00	1,125.00	1,125.00	4,500.00
07002 Professional	0.00	66.67	66.67	3,600.00	200.01	(3,399.99)	800.00
07003 Legal Fees	0.00	208.33	208.33	247.20	624.99	377.79	2,500.00
07004 Bad Bebt	72.76	0.00	(72.76)	72.76	0.00	(72.76)	0.00
07005 Licenses, Taxes, Fees	450.00	83.33	(366.67)	511.25	249.99	(261.26)	1,000.00
07006 Office Expense	100.00	41.67	(58.33)	100.00	125.01	25.01	500.00
07007 Postage / Printing	183.19	62.50	(120.69)	530.81	187.50	(343.31)	750.00
07011 Accounting Services	950.00	950.00	0.00	3,170.00	2,850.00	(320.00)	11,400.00
07012 Consulting Fees	0.00	83.33	83.33	0.00	249.99	249.99	1,000.00
07013 Digital Subscriptions	110.65	125.00	14.35	831.95	375.00	(456.95)	1,500.00
07014 Boca Pointe Comm Ass'n Charges	10,907.01	10,907.00	(0.01)	32,721.03	32,721.00	(0.03)	130,884.00
General & Administrative Total	12,773.61	12,902.83	129.22	41,785.00	38,708.49	(3,076.51)	154,834.00
Insurance							
07110 Insurance	27,809.57	29,583.33	1,773.76	83,561.29	88,749.99	5,188.70	355,000.00
Insurance Total	27,809.57	29,583.33	1,773.76	83,561.29	88,749.99	5,188.70	355,000.00
Contract Services							
07302 HVAC	350.00	116.67	(233.33)	350.00	350.01	0.01	1,400.00
07303 Elevator	0.00	1,000.00	1,000.00	1,700.00	3,000.00	1,300.00	12,000.00
07305 Fire Alarm Monitoring	133.22	104.17	(29.05)	399.66	312.51	(87.15)	1,250.00
07307 Generator	0.00	208.33	208.33	0.00	624.99	624.99	2,500.00
07308 Alarm Services	786.78	833.33	46.55	2,333.44	2,499.99	166.55	10,000.00
07311 Landscape Maintenance	1,300.00	1,291.67	(8.33)	6,027.00	3,875.01	(2,151.99)	15,500.00
07313 Tree Trimming	0.00	566.67	566.67	0.00	1,700.01	1,700.01	6,800.00
07314 Pest Control	176.00	250.00	74.00	528.00	750.00	222.00	3,000.00
Contract Services Total	2,746.00	4,370.84	1,624.84	11,338.10	13,112.52	1,774.42	52,450.00
Utilities							
07401 Electricity	2,226.74	2,333.33	106.59	5,678.21	6,999.99	1,321.78	28,000.00
07402 Water & Sewer	3,984.44	3,750.00	(234.44)	12,223.54	11,250.00	(973.54)	45,000.00
07403 Telephone	540.60	508.33	(32.27)	1,621.80	1,524.99	(96.81)	6,100.00
07406 Cable TV	3,961.59	3,833.33	(128.26)	11,883.53	11,499.99	(383.54)	46,000.00
07407 Waste Removal	120.00	125.00	5.00	360.00	375.00	15.00	1,500.00

Account	Current			Year to Date			Yearly
	Actual	Budget	Variance	Actual	Budget	Variance	Budget
Utilities Total	10,833.37	10,549.99	(283.38)	31,767.08	31,649.97	(117.11)	126,600.00
Repairs & Maintenance							
07502 Plumbing	0.00	250.00	250.00	2,994.79	750.00	(2,244.79)	3,000.00
07503 General Repairs [Units]	650.00	416.67	(233.33)	650.00	1,250.01	600.01	5,000.00
07505 Building Repairs & Maintenance	0.00	833.33	833.33	4,775.75	2,499.99	(2,275.76)	10,000.00
07508 Roof	0.00	166.67	166.67	0.00	500.01	500.01	2,000.00
07509 HVAC System	0.00	166.67	166.67	2,950.00	500.01	(2,449.99)	2,000.00
07510 Generator	1,563.16	125.00	(1,438.16)	1,563.16	375.00	(1,188.16)	1,500.00
07511 Irrigation / Sprinkler	0.00	83.33	83.33	0.00	249.99	249.99	1,000.00
07512 Landscape	0.00	1,250.00	1,250.00	850.00	3,750.00	2,900.00	15,000.00
07514 Elevator	0.00	208.33	208.33	520.00	624.99	104.99	2,500.00
07515 General Supplies	0.00	83.33	83.33	0.00	249.99	249.99	1,000.00
07519 Fire Equipment	677.78	625.00	(52.78)	677.78	1,875.00	1,197.22	7,500.00
07523 Pest/Rodent Control Extra	300.00	41.67	(258.33)	300.00	125.01	(174.99)	500.00
07527 Fire Alarm	0.00	333.33	333.33	0.00	999.99	999.99	4,000.00
Repairs & Maintenance Total	3,190.94	4,583.33	1,392.39	15,281.48	13,749.99	(1,531.49)	55,000.00
Reserve							
07900 Reserve	22,513.58	22,513.58	0.00	67,540.74	67,540.74	0.00	270,163.00
Reserve Total	22,513.58	22,513.58	0.00	67,540.74	67,540.74	0.00	270,163.00
Total Expense	79,867.07	84,503.90	4,636.83	251,273.69	253,511.70	2,238.01	1,014,047.00
Net Income	8,938.57	0.02	8,938.55	7,740.31	0.06	7,740.25	0.00

Definitions

AMORTIZED DEFICIT: A deficit is created when the association's reserve fund balance falls below the minimum threshold set by the reserve analyst and or the board over the 20-year reserve analysis. A deficit is typically created when the starting reserve balance plus the normal annual contributions are insufficient to cover the replacement of capital expenses over a period of 20 years. A deficit can occur once or multiple times over a period of the 20-year analysis. For example: The minimum reserve threshold balance is \$50,000 and the normal annual contribution is \$60,000. According to the analysis, if in year 5 the association's reserve fund balance is a negative \$20,000, we would need to add \$70,000 in order to maintain the minimum threshold of \$50,000 in year 5. This \$70,000 is not charged to that year's contribution but amortized into the previous years for a more equitable distribution of the deficit. The \$70,000 would then be divided by the preceding 5 years with an amortized deficit of \$14,000 a year. The new Annual Contribution would then be \$74,000 (\$60,000 + \$14,000) for the next 5 years.

ASSOCIATION: For the purposes of this document "Association" shall encompass Community Associations, schools, commercial buildings, mutual utility properties, worship facilities, and any other entity interested in the long-range planning for the maintenance and replacement of the major components.

CAPITAL EXPENDITURE(S): Any expenditure of funds related to the maintenance and or replacement of an asset that has a greater life expectancy than 1 year.

CAPITAL IMPROVEMENTS: Additions to the association's common elements that previously did not exist. While these components should be added to the reserve study for future replacement, the cost of construction should not be taken from the reserve fund.

CASH FLOW METHOD: A method of developing a reserve funding plan where contributions to the reserve fund are designed to offset the variable annual expenditures from the reserve fund. Different reserve funding plans are tested against the anticipated schedule of reserve expenses until the desired funding goal is achieved.

COMPONENT(S): The individual assets listed in the reserve analysis section of the report within the reserve study. These assets form the building blocks for the reserve study. These components comprise the common elements of the community and typically are: 1. association responsibility, 2. with limited useful life expectancies, 3. predictable remaining useful life expectancies, and 4. above a minimum threshold cost. It should be noted that in certain jurisdictions there may be statutory requirements for including components or groups of components in the reserve study.

COMPONENT ASSESSMENT AND VALUATION: The task of estimating Useful Life, Remaining Useful Life, and Repair or Replacement Costs for the Reserve Components. This task is accomplished either with or without onsite visual observations, based on the Level of Service selected by the client.

COMPONENT INVENTORY: The task of selecting and quantifying reserve components. This task can be accomplished through on-site visual observations, review of association design and organizational documents, review of association precedents, and discussion with appropriate representative(s) of the association.

COMPONENT METHOD: A method of developing a reserve funding plan where the total contribution is based on the sum of contributions for the individual components.

CONDITION ASSESSMENT: The task of evaluating the current condition of the component based on observed or reported characteristics.

CURRENT COST: A component's current replacement cost as of the date of the financial analysis. Current cost may be less or greater than the total replacement cost depending on the defined replacement scope.

DEFICIT: An actual (or projected) Reserve Balance less than the Fully Funded Balance. The opposite would be a Surplus.

ECONOMIC LIFE: the portion of the total life of a property up until the infrastructure is no longer economically viable to maintain and a significant reinvestment, rebuilding, or renovation is necessary.

EFFECTIVE AGE: The difference between useful life and remaining useful life. Not always equivalent to chronological age, since some components age irregularly. Used primarily in computations.

FINANCIAL ANALYSIS: The portion of a reserve study where the status of the reserves (measured as cash or percent funded) and a recommended reserve contribution rate (funding plan) are derived, and the projected reserve income and expense over a period of time are presented. Financial analysis is one of the two parts of a reserve study.

FULL STUDY: Complete qualitative and quantitative study includes a site visit.

FULLY FUNDED: 100 percent funded. When the actual reserve balance of the association is equal to the fully funded balance/total accrued depreciation.

FULLY FUNDED BALANCE (FFB): Total Accrued Depreciation. An indicator against which Actual (or projected) Reserve Balance can be compared. In essence, it is the Reserve Balance that is proportional to the current Repair/replacement cost and the fraction of life “used up”. This number is calculated for each Component, then summed together for an Association total. Two formulae can be utilized, depending on the provider’s sensitivity to interest and inflation effects. Note: both yield identical results when interest and inflation are equivalent.

FFB = Current Cost X Effective Age divided by Useful Life Example: For a component with a \$10,000 current replacement cost, a 10-year useful life and effective age of 4 years the fully funded balance would be \$4,000.

FUND STATUS: The status of the reserve fund reported in terms of cash or percent funded.

FUNDING GOALS: Independent of methodology used, the following represent the basic categories of funding plan goals. They are presented in order of greatest risk to least risk. Risk includes, but is not limited to, cash problems, special assessments, and deferred maintenance.

Baseline Funding: Establishing a reserve funding goal of allowing the reserve cash balance to never fall below zero (\$0) during the cash flow projection period of 20 or 30 years. This is the funding goal with the greatest risk due to the variability encountered in the timing of component replacements and repair and replacement costs.

Threshold Funding: Establishing a reserve funding goal of keeping the reserve balance above a specified dollar or percent funded amount. Depending on the threshold selected, this funding goal may be weaker or stronger than “Fully Funded” with respective higher risk or less risk of cash problems.

Full Funding: Setting a reserve funding goal to attain and maintain reserves at or near 100 percent funded. This is the most conservative funding goal. It should be noted that in certain jurisdictions there may be statutory funding requirements that would dictate the minimum requirements for funding.

FUNDING PLAN: An association’s plan to provide income to a reserve fund to offset anticipated expenditures from that fund. The plan must be a minimum of twenty (20) years.

INFLATED EXPENDITURES: The combined annual expenditures for a given year are inflated to reflect their estimated future replacement cost.

INFLATIONARY MULTIPLIER: The number multiplies by the annual expenditures to estimate the future replacement cost. If inflation was currently projected at 3%, the initial year multiplier would be 1.00, Next Year 1.03, Next year 1.061, etc.

LIFE AND VALUATION ESTIMATES: The task of estimating useful life, remaining useful life, and current repair or

replacement costs for the reserve components.

NORMAL ANNUAL CONTRIBUTION: Calculated using the individual component's replacement cost divided by the useful life of that particular component item. For example, a roof costing \$50,000 with a useful life of 20 years would create a normal annual contribution of \$2,500. The normal annual contribution can be different from the annual contribution if a deficit is created in the association's reserve fund balance over a period of 20 years. See "amortized deficit" above.

PERCENT FUNDED: The ratio, at a particular point in time, of the actual (or projected) reserve balance to the fully funded balance, expressed as a percentage. While percent funded is an indicator of an association's reserve fund size, it should be viewed in the context of how it is changing due to the association's reserve funding plan in light of the association's risk tolerance.

PHYSICAL ANALYSIS: The portion of the reserve study where the component inventory, condition assessment, and life and valuation estimate tasks are performed. This represents one of the two parts of the reserve study.

QUANTITY: The total Quantity of each Component.

READILY ACCESSIBLE: Can be reached, entered, or viewed without difficulty, moving obstructions, or requiring any action which may harm or endanger persons or property.

REMAINING USEFUL LIFE (RUL): Also referred to as "remaining life" (RL). The estimated time, in years, that a reserve component can be expected to serve its intended function. Projects expected to occur in the initial year have zero remaining useful life.

REPLACEMENT COST: The cost to replace, repair, or restore the component to its original functional condition during that particular year, including all related expenses (including but not limited to shipping, engineering, and design, permits, installation, disposal, etc.).

RESERVE ANALYST: A person who prepares Reserve Studies.

RESERVE ASSESSMENT: The portion of assessments contributed to the Reserve Fund.

RESERVE BALANCE: Actual or projected funds, as of a particular point in time that the association has identified, to defray the future repair or replacement cost of those major components that the association is obligated to maintain

or replace. Also known as reserves, reserve accounts, cash reserves. Based on information provided and not audited.

RESERVE FUND: Those funds set aside for the future repair, replacement, or restoration of the Reserve Components.

RESERVE PROVIDER: An individual who prepares reserve studies. In many instances the reserve provider will possess a specialized designation such as the Reserve Specialist (RS) designation provided by Community Associations Institute (CAI). Another important designation is the Professional Reserve Analyst (PRA) which is designation/credentials provided by the Association of Professional Reserve Analyst. This designation(s) indicates that the provider has shown the necessary skills to perform a reserve study that conforms to these standards.

RESERVE CATEGORY(IES): Major asset category types created for the association, for example: Roofing, Painting, Paving, Pool, Replace & Restoration, etc. Each major category will have individual components/assets that are related to the major category.

RESERVE PROVIDER FIRM: A company that prepares reserve studies as one of its primary business activities.

RESERVE STUDY: A budgeting tool which identifies the current status of the Reserve Fund and a stable and equitable Funding Plan to offset the anticipated future “major common area expenditures”. The Reserve Study consists of two parts: the Physical Analysis and the Financial Analysis.

SITE VISIT: A visit to the common areas of the Association for the purposes of determining the Component Inventory and the Component Assessment and Valuation.

SPECIAL ASSESSMENT: An assessment levied on the members of an Association in addition to regular assessments. Special Assessments are often regulated by Governing Documents or applicable statutes.

STATUTORY FUNDINGS: Establishing a Reserve Funding Goal of setting aside the specific minimum amount of funds required by applicable statutes.

STRAIGHT LINE: A formula used to calculate the annual Reserve Fund contribution for a specific Component. The projected replacement cost divided by the Useful Life equals the annual payment.

STRUCTURAL INTEGRITY RESERVE STUDY (SIRS): As per the new State Laws that went into effect in 2022 and further revised in 2023, this report provides a specific list of categories that all residential buildings that are 3 stories in height or taller must obtain for their association/cooperative. Those specific categories are Roof, Structure, Fireproofing &

Fire Protection Systems, Plumbing, Electrical Systems, Waterproofing/Painting, Windows & Exterior Doors, and any other items that has a deferred maintenance expense or replacement cost that exceeds \$10,000 and the failure to replaced or maintain such items negatively affects the specific list of items... ie. roof, structure, etc. This report is required to be ordered at least once every 10 years. The right to waive or partially fund the SIRS report funding is no longer allowed by the State of Florida as of budget year 2026. These specific reserve categories mentioned cannot be co-mingled with your typical reserve items such as paving, elevators, interiors, etc.

TRADITIONAL RESERVE STUDY: For most HOA associations and 2-story condominiums, this is your typical standard reserve study that includes items such as Roofing, Painting, Paving, and any other items that equal to \$10,000 or more. The \$10,000 can either be an individual asset/component item or it can be a system such as the total of all your pool equipment. This reserve study in a normal sense will include items such as guardhouse(s), interiors, elevators, pool & spa, tennis courts, detached parking garages, irrigation pump stations, other mechanical items, etc. For associations that require a State of Florida SIRS report will exclude those specific categories required by the SIRS report. The traditional reserve study is still required to be annually fully funding. The State of Florida has allowed condo/coop associations to either partially fund and or not fund the traditional reserve study items, but the board must obtain an annual vote from the membership.

UNIT COST: The cost of a Component. The Unit Cost is multiplied by the Component's Quantity to obtain the total estimated replacement cost for the Component.

UNIT OF MEASURE: Refers to the method of measurement applied to a particular Component. The following are examples:

Square Feet

Lineal Feet or Linear Feet

Each

Square Yards

Lump Sum

Squares

UPDATE WITH SITE VISIT: Qualitative only update and review study, includes site visit.

UPDATE WITHOUT SITE VISIT: Financial only update study, does not include site visit.

USEFUL/NORMAL LIFE (UL): The estimated time, in years, that a reserve component can be expected to serve its intended function if properly constructed in its present application or installation.

PRODUCT & MATERIAL
PRICING ~ DESCRIPTIONS ~ LONGEVITY
RESOURCES

Marshall & Swift Publications (Corelogic) – monthly/quarterly pricing updates)

“Marshall Valuation Service Manual” is a national authoritative pricing guide for developing replacement cost, insurable values, equipment cost, depreciation, and normal useful lives on nearly every type of equipment or improved property. This on-line software is a national authoritative pricing guide for developing replacement cost valuation of commercial and agricultural properties.

Additional Resources: local consulting trade contractors, invoices & contracts collected in current and prior years from similar types of associations and cooperatives in your local area.

PARTIAL LISTING OF CONSULTING CONTRACTORS

Company Name	Phone Number	Contact Name	Type of Service	Website Address
ACE Courts	407-702-3690	Jeff Snodgrass	Sports Courts	www.acecourtsinc.com
A-1 Appliance Repair	561-232-9411	Fred Kaye	Repair on all Major Appliances	www.A1appliancefla.com
Adel Resurfacing Company	561-848-3973	Marty Adel	Asphalt & Concrete Paving	
Advance Roofing, Inc.	954-522-6868	Randy Gibson	Roofing	
Alenac & Associates	954-558-4131	Ann Klecan	Railing, Fencing, Shutters, Restoration	www.alenacmetals.com
All County Pavement Management	561-588-0949		Paving Contractor, Repair and Maintenance	https://allcountypaving.com/
Allied Universal Security Services	954-698-5888		Security Services	www.aus.com
All Pro Painting & Waterproofing	561-482-1855		Painting, Waterproofing, Restoration	www.allpropaintfl.com
APB Security, Inc.	754-367-1951	Tom Acosta	Security Gaurds, Monitoring, Officers	www.apbinc.com
Asphalt Restoration Technology	800-254-4732		Asphalt & Concrete Paving	
Bass United Fire & Security System	800-372-2770	Brad Hiddon/Linda	Fire Alarm & Sprinkler, Security & Camera Systems	www.bassunited.com
BB&T Bank	561-251-1980	Jayne Gelfand	Community Banking Specialist	
Beautiful Mailbox	305-403-4820	Sheri Corsetti	Mailboxes & Street Signs	www.beautifulmailbox.com/
Becker & Poliakoff, PA	954-987-7550	Kenneth Direktor	Attorney	www.beckerlawyers.com
Best Roofing	888-723-2378	Gregg Wallick	Roofing	www.bestroofing.net
Billerreinhardt Engineering Group	954-951-9006	Kristen Forman	Structural Engineer	
B.P. Taurinski Engineering	561-997-6141	John Bygott	Stuctural Engineer	
Botanical Visions, Inc.	561-361-6677	William Reeves	Horticulturalist/ Landscaping	www.botanicalvisions.com
Boynton Billards	561-543-0928	Josh Gibson	Game Room related products	www.boyntonbilliards.com
Budget Signs, Inc.	954-941-5710	April Simmons	Signs, Mailboxes & Monuments	www.signsatsimmonsdesigngroup.com
Carousel Construction	561-272-3700	Michael Bianchini	Concrete Restorations	www.cdri.net
Caulfield & Wheeler	561-392-1991		Survey /Civil Engineering	www.cwi-assoc.com
Centennial Bank	561-236 3378	Jennifer Olson/Kathy Naughton	Community Banking Specialist	www.my100bank.com
Center State Bank	561-237-2991	Martha MaDan	Community Banking Specialist	
Chalaire & Associates Engineering	561-848-7055	Donald Chalaire	Engineering- buildings, seawall & Docks	www.chalaireandassociates.com
Circle Generator Service	954-767-8331	Karl Schibinger	Generator	www.circlegenerators.com
Citiquiet Windows & Doors	561-241-9463	Benjamin Friedman	Windows & Doors	www.citiquiethurricanewindows.com
Climate Control Services	561-278-7125	Chuck Walker	Air Conditioning Serv.	
Chapnick Community Association Law	561-330-3096	Michael Chapnick	Attorney	www.michaelchapnick.com
Coastal Painting	800-320-8083		Painting, Waterproofing, Restoration	www.coastalpaintingcompany.com
Conduu Web Soultution/IBA	561-602-5688	Bob Currie	Website, apps & Software for Mgmt, HOA & COA	https://conduu.com/

Company Name	Phone Number	Contact Name	Type of Service	Website Address
Community Associaiton Institute	561-716-3646	Michele Bilawsky	Chapter Executive Director	
Core Logic/Marshall Valuation Service	800-526-2756		Building Cost Estimator	
Culpepper Plumbing /Advantage Rooter	561-478-7878	Tom Fucarile	Lift Station, Plumbing Risers, Septic tank	www.culpepperplumbing.com
Daniello & Associates, Inc.	561-835-4788	Lou Daniello	Concrete Restorations, Painting & Water Proofing,	www.concreterepairing.net
Decks & Docks Lumber Company	561-609-9925	Scott Boelman	Decks,Docks, Piers, and Seawall	www.decks-docks.com
Decktight Roofing Services	800-825-7663	Randy Bender	Roofing-Miami Skyline	www.decktight.com
Dock & More Construction Company	561-753-3600	Patrick Dabney	Docks & Seawalls	https://docksmore.com/
Driveway Maintenance Inc.	561-848-4004	Nick Small	Asphalt & Concrete Paving	www.driveway.net
Dry-Concepts	954-370-7778		Mold Remediation & Disaster Restoration	www.dryconcepts.com
Duct Masters	954-791-4111	Roger Herde	Air Conditioning & Consultation, Duct Cleaning	www.ductmasters.com
Dykes, Stevens & Co. CPA	561-392-4228	Scott Stevens	CPA, Accounting & Audit	
Boca Dock & Seawall	561-750-4255	Ken Wells/ Gary	Docks & Seawalls	
Elcon Electronic	800-446-8915		Street Lighting & Electric Service	www.elconelectric.com
Erosion Barrier Installations	954-680-8603		Lake Erosion, Retaining & Seawall	www.erosionbarrier.com
Fast Dry Courts, Inc.	954-979-3111		Sports Courts	www.fast-dry.com
Florida Playgrounds	800-715-7617	Manny Espaillat	Playgrounds Design, Repair, Surfacing & Shade	www.floridaplaygrounds.net
Florida Sidewalk Solutions	954-514-7218		Sidewalk Repairs	www.floridasidewalksolutions.com
Fuoco Group, LLC. CPA	561-367-2960		CPA, Accounting & Audit	www.fuoco.com
Hafer Accounting, CPA	561-655-8700	Nicole Johnson	CPA, Accounting, Consulting & Audit	www.hafercpas.com
Hartzel Painting	954-957-9761		Painting, Waterproofing, Restoration	www.myhartzell.com
Hoover Pumping Systems	954-971-7350	Donna Hoover	Irrigation Pump Stations	www.hooverpumping.com
Howard J. Miller PA & Associates	561-392-2326	Steve Young	Engineering	
HVAC Masters LLC.	786-577-4829	Carlo or Monique	A/C, Cooling & Heating	www.hvacmastersfl.com
Industrial Engineering Services	800-432-6304	Carol	Mechanical Contractor, Pipe installation	
James C. Witteck, INC	772-215-8965	James Witteck	Lift Stations & Waste Water Treatment Plant Maint.	
J. B. Painting & Waterproofing	800-228-3992	Jim Brown	Painting, Waterproofing, Restoration	https://jbpaint.com
Kaye & Bender	954-928-0680	Michael Bender	Attorney	www.kbrlegal.com
Kids Stuff Play Systems	800-255-0153	Dick Hagelberg	Playgrounds, Repair, Surfacing & Shade	www.kidstuffplaysystems.com
Lake & Wetland Management	561-220-4380		Lake & Wetland Management	www.lakeandwetland.com
Landmark Elevator Consultants	954-785-1947	Peter Hofmeister	Consultant	www.landmarkelevatorconsultants.com
The Loomis Company	954-772-0448	Hector Medina	Insurance	www.loomisco.com
Merlin Law Group, PA	877-449-4700	Chip Merlin	Attorney,Insurance Claims	https://www.merlinlawgroup.com

Company Name	Phone Number	Contact Name	Type of Service	Website Address
Mr Rooter Plumbing	800-863-5874		Plumbing & Drains	https://www.mrrooter.com/
OK Generator	800-385-3187		generator company	http://www.okgenerators.com
Onmy & O'Donnell, Naccarto, Mignogna	561-835-9994	Joseph Mincuzzi	Structural Engineer	https://www.onmj.net/
Plastridge Insurance Agency	561-276-5221	Mike Bottcher	Association Insurance Agent	https://www.plastridge.com/
Railsback Pump & Control Services	954-792-6627	George/Pam	Fire pumps, Replace, Repair & Rebuilt	
Ranger Construction	561-793-9400	Brill Maxwell	Asphalt Paving	http://www.rangerconstruction.com/
RCI Painting	954-978-1213	Marcel Rosen	Painting Company	
Rick Carroll Insurance	800-290-3181	Keith Carroll	Insurance Agent	https://www.rickcarroll.com/
Robert Dunn Signs	561 969-3296	Robert Dunn	Stop signs, street signs etc.	www.robertdunnsigns.com
Roof-A-Cide	800-806-6727	John Browne	Roof Cleaning	https://roof-a-cide.com/
Solitude Lake Management	561-293-4809	Gary Wilhem	wetland, Aeration, weed control, Erosion	www.solitudelakemanagement.com
Sachs, Sax & Caplan	561-994-4499	Lou Caplan	Attorney	https://ssclawfirm.com
Sailfish Mechanical & Plumbing	561-303-4413	Kim Micolo	Pool Heater, A/C, Boiler, Pumps	https://sailfishmechanical.com
Shenandoah Construction	954-975-0098	Danny DiMura	Pipes & Drainage Clean/Repairs	www.shenandoahconstruction.com
South Florida Mailbox	561-389-2491	Klye Koteles	Mailboxes	www.southfloridamailbox.com
Southern Chute	866-475-9191		Trash Chutes	ww.southernchute.com
Southern Park & Play Systems, Inc.	800-247-1545	Larry Thompson	Playground and Park Equipment	http://www.southernparkandplay.com
Sullivan Electric & Pump, Inc.	561-588-5886	Gary Sullivan	Irrigation, Pump, Motor, Electric services	http://www.sullivanelectric-pump.com
Symbiont Service Corp.	800-881-4328		Pool Heating, cooling, A/C	https://symbiontservice.com/
The Nidy Co./ Vasco Group	800-226-6439		Sports Courts	www.nidy-sports.thevascogroup.com/
Turf Kingdom	561-630-8733	Linda DiAlfonso	Turf installation	https://turfkingdom.com/
Victory Accounting Services, Inc.	561-739-7990	Vicki Feicht	Accounting	www.victoryaccounting.com
Whiting Construction	772-223-1215	Gene Whiting	General Contractor	
Zabatt Generators, Inc.	800-366-1323		Generators	www.zabatt.com

Florida Statutes - Chapter 718

Florida Statutes 718 (Condominiums)

(f)Annual budget:

1. The proposed annual budget of estimated revenues and expenses must be detailed and must show the amounts budgeted by accounts and expense classifications, including, at a minimum, any applicable expenses listed in s. 718.504(21). The board shall adopt the annual budget at least 14 days before the start of the association's fiscal year. In the event that the board fails to timely adopt the annual budget a second time, it is deemed a minor violation and the prior year's budget shall continue in effect until a new budget is adopted. A multi-condominium association must adopt a separate budget of common expenses for each condominium the association operates and must adopt a separate budget of common expenses for the association. In addition, if the association maintains limited common elements with the cost to be shared only by those entitled to use the limited common elements as provided for in s. 718.113(1), the budget or a schedule attached to it must show the amount budgeted for this maintenance. If, after turnover of control of the association to the unit owners, any of the expenses listed in s. 718.504(21) are not applicable, they do not need to be listed.

2.a. In addition to annual operating expenses, the budget must include reserve accounts for capital expenditures and deferred maintenance. These accounts must include, but are not limited to, roof replacement, building painting, and pavement resurfacing, regardless of the amount of deferred maintenance expense or replacement cost, and any other item that has a deferred maintenance expense or replacement cost that exceeds \$10,000. The amount to be reserved must be computed using a formula based upon estimated remaining useful life and estimated replacement cost or deferred maintenance expense of the reserve item. In a budget adopted by an association that is required to obtain a structural integrity reserve study, reserves must be maintained for the items identified in paragraph (g) for which the association is responsible pursuant to the declaration of condominium, and the reserve amount for such items must be based on the findings and recommendations of the association's most recent structural integrity reserve study. With respect to items for which an estimate of useful life is not readily ascertainable or with an estimated remaining useful life of greater than 25 years, an association is not required to reserve replacement costs for such items, but an association must reserve the amount of deferred maintenance expense, if any, which is recommended by the structural integrity reserve study for such items. The association may adjust replacement reserve assessments annually to take into account an inflation adjustment and any changes in estimates or extension of the useful life of a reserve item caused by deferred maintenance. The members of a unit-owner-controlled association may determine, by a majority vote of the total voting interests of the association, to provide no reserves or less reserves than required by this subsection. For a budget adopted on or after December 31, 2024, the members of a unit-owner-controlled association that must obtain a structural integrity reserve study may not determine to provide no reserves or less reserves than required by this subsection for items listed in paragraph (g), except that members of an association operating a multi-condominium may determine to provide no reserves or less reserves than required by this subsection if an

alternative funding method has been approved by the division. If the local building official, as defined in s. 468.603, determines that the entire condominium building is uninhabitable due to a natural emergency, as defined in s. 252.34, the board, upon the approval of a majority of its members, may pause the contribution to its reserves or reduce reserve funding until the local building official determines that the condominium building is habitable. Any reserve account funds held by the association may be expended, pursuant to the board's determination, to make the condominium building and its structures habitable. Upon the determination by the local building official that the condominium building is habitable, the association must immediately resume contributing funds to its reserves.

b. Before turnover of control of an association by a developer to unit owners other than a developer under s. 718.301, the developer-controlled association may not vote to waive the reserves or reduce funding of the reserves. If a meeting of the unit owners has been called to determine whether to waive or reduce the funding of reserves and no such result is achieved or a quorum is not attained, the reserves included in the budget shall go into effect. After the turnover, the developer may vote its voting interest to waive or reduce the funding of reserves.

3. Reserve funds and any interest accruing thereon shall remain in the reserve account or accounts, and may be used only for authorized reserve expenditures unless their use for other purposes is approved in advance by a majority vote of all the total voting interests of the association. Before turnover of control of an association by a developer to unit owners other than the developer pursuant to s. 718.301, the developer-controlled association may not vote to use reserves for purposes other than those for which they were intended. For a budget adopted on or after December 31, 2024, members of a unit-owner-controlled association that must obtain a structural integrity reserve study may not vote to use reserve funds, or any interest accruing thereon, for any other purpose other than the replacement or deferred maintenance costs of the components listed in paragraph (g).

4. The only voting interests that are eligible to vote on questions that involve waiving or reducing the funding of reserves, or using existing reserve funds for purposes other than purposes for which the reserves were intended, are the voting interests of the units subject to assessment to fund the reserves in question. Proxy questions relating to waiving or reducing the funding of reserves or using existing reserve funds for purposes other than purposes for which the reserves were intended must contain the following statement in capitalized, bold letters in a font size larger than any other used on the face of the proxy ballot: **WAIVING OF RESERVES, IN WHOLE OR IN PART, OR ALLOWING ALTERNATIVE USES OF EXISTING RESERVES MAY RESULT IN UNIT OWNER LIABILITY FOR PAYMENT OF UNANTICIPATED SPECIAL ASSESSMENTS REGARDING THOSE ITEMS.**

(g) *Structural integrity reserve study.*—

1. A residential condominium association must have a structural integrity reserve study completed at least every 10 years after the condominium's creation for each building on the condominium property that is three stories or higher in height, as determined by the Florida Building Code, which includes, at a minimum, a study of the following items as related to the structural integrity and safety of the building:

a. Roof.

b. Structure, including load-bearing walls and other primary structural members and primary structural systems as those terms are defined in s. 627.706.

- c. Fireproofing and fire protection systems.
- d. Plumbing.
- e. Electrical systems.
- f. Waterproofing and exterior painting.
- g. Windows and exterior doors.
- h. Any other item that has a deferred maintenance expense or replacement cost that exceeds \$10,000 and the failure to replace or maintain such item negatively affects the items listed in sub-subparagraphs a.-g., as determined by the visual inspection portion of the structural integrity reserve study.

2. A structural integrity reserve study is based on a visual inspection of the condominium property. A structural integrity reserve study may be performed by any person qualified to perform such study. However, the visual inspection portion of the structural integrity reserve study must be performed or verified by an engineer licensed under chapter 471, an architect licensed under chapter 481, or a person certified as a reserve specialist or professional reserve analyst by the Community Associations Institute or the Association of Professional Reserve Analysts.

3. At a minimum, a structural integrity reserve study must identify each item of the condominium property being visually inspected, state the estimated remaining useful life and the estimated replacement cost or deferred maintenance expense of each item of the condominium property being visually inspected, and provide a reserve funding schedule with a recommended annual reserve amount that achieves the estimated replacement cost or deferred maintenance expense of each item of condominium property being visually inspected by the end of the estimated remaining useful life of the item. The structural integrity reserve study may recommend that reserves do not need to be maintained for any item for which an estimate of useful life and an estimate of replacement cost cannot be determined, or the study may recommend a deferred maintenance expense amount for such item. The structural integrity reserve study may recommend that reserves for replacement costs do not need to be maintained for any item with an estimated remaining useful life of greater than 25 years, but the study may recommend a deferred maintenance expense amount for such item.

4. This paragraph does not apply to buildings less than three stories in height; single-family, two-family, or three-family dwellings with three or fewer habitable stories above ground; any portion or component of a building that has not been submitted to the condominium form of ownership; or any portion or component of a building that is maintained by a party other than the association.

5. Before a developer turns over control of an association to unit owners other than the developer, the developer must have a turnover inspection report in compliance with s. 718.301(4)(p) and (q) for each building on the condominium property that is three stories or higher in height.

6. Associations existing on or before July 1, 2022, which are controlled by unit owners other than the developer, must have a structural integrity reserve study completed by December 31, 2024, for each building on the condominium property that is three stories or higher in height. An association that is required to complete a milestone inspection in accordance with s.

553.899 on or before December 31, 2026, may complete the structural integrity reserve study simultaneously with the milestone inspection. In no event may the structural integrity reserve study be completed after December 31, 2026.

7. If the milestone inspection required by s. 553.899, or an inspection completed for a similar local requirement, was performed within the past 5 years and meets the requirements of this paragraph, such inspection may be used in place of the visual inspection portion of the structural integrity reserve study.

8. If the officers or directors of an association willfully and knowingly fail to complete a structural integrity reserve study pursuant to this paragraph, such failure is a breach of an officer's and director's fiduciary relationship to the unit owners under s. 718.111(1).

9. Within 45 days after receiving the structural integrity reserve study, the association must distribute a copy of the study to each unit owner or deliver to each unit owner a notice that the completed study is available for inspection and copying upon a written request. Distribution of a copy of the study or notice must be made by United States mail or personal delivery to the mailing address, property address, or any other address of the owner provided to fulfill the association's notice requirements under this chapter, or by electronic transmission to the e-mail address or facsimile number provided to fulfill the association's notice requirements to unit owners who previously consented to receive notice by electronic transmission.

10. Within 45 days after receiving the structural integrity reserve study, the association must provide the division with a statement indicating that the study was completed and that the association provided or made available such study to each unit owner in accordance with this section. The statement must be provided to the division in the manner established by the division using a form posted on the division's website.

Florida Administrative Code

Florida Administrative Code 61B-22.005 Reserves (Publish Date: 12/23/2002)

(1) Reserves required by statute. Reserves required by Section 718.112(2)(f), Florida Statutes, for capital expenditures and deferred maintenance including roofing, painting, paving, and any other item for which the deferred maintenance expense or replacement cost exceeds \$10,000 shall be included in the budget. For the purpose of determining whether the deferred maintenance expense or replacement cost of an item exceeds \$10,000, the association may consider each asset of the

association separately. Alternatively, the association may group similar or related assets together. For example, an association responsible for the maintenance of two swimming pools, each of which will separately require \$6,000 of total deferred maintenance, may establish a pool reserve, but is not required to do so.

(2) Commingling operating and reserve funds. Associations that collect operating and reserve assessments as a single payment shall not be considered to have commingled the funds provided the reserve portion of the payment is transferred to a separate reserve account, or accounts, within 30 calendar days from the date such funds were deposited.

(3) Calculating reserves required by statute. Reserves for deferred maintenance and capital expenditures required by Section 718.112(2)(f), Florida Statutes, shall be calculated using a formula that will provide funds equal to the total estimated deferred maintenance expense or total estimated replacement cost for an asset or group of assets over the remaining useful life of the asset or group of assets. Funding formulas for reserves required by Section 718.112(2)(f), Florida Statutes, shall be based on either a separate analysis of each of the required assets or a pooled analysis of two or more of the required assets.

(a) If the association maintains separate reserve accounts for each of the required assets, the amount of the current year contribution to each reserve account shall be the sum of the following two calculations:

- 1.** The total amount necessary, if any, to bring a negative account balance to zero; and
- 2.** The total estimated deferred maintenance expense or estimated replacement cost of the reserve asset less the estimated balance of the reserve account as of the beginning of the period for which the budget will be in effect. The remainder, if greater than zero, shall be divided by the estimated remaining useful life of the asset. The formula may be adjusted each year for changes in estimates and deferred maintenance performed during the year and may consider factors such as inflation and earnings on invested funds.

(b) If the association maintains a pooled account of two or more of the required reserve assets, the amount of the contribution to the pooled reserve account as disclosed on the proposed budget shall be not less than that required to ensure that the balance on hand at the beginning of the period for which the budget will go into effect plus the projected annual cash inflows over the remaining estimated useful lives of all of the assets that make up the reserve pool are equal to or greater than the projected annual cash outflows over the remaining estimated useful lives of all of the assets that make up the reserve pool, based on the current reserve analysis. The projected annual cash inflows may include estimated earnings from investment of principal. The reserve funding formula shall not include any type of balloon payments.

(4) Estimating reserves that are not required by statute. Reserves that are not required by Section 718.112(2)(f), Florida Statutes, are not required to be based on any specific formula.

(5) Estimating non-converter reserves when the developer is funding converter reserves. For the purpose of estimating non-converter reserves, the estimated fund balance of the non-converter reserve account related to any asset for which the developer has established converter reserves pursuant to Section 718.618, Florida Statutes, shall be the sum of:

(a) The developer's total funding obligation, when all units are sold, for the converter reserve account pursuant to Section 718.618, Florida Statutes; and

(b) The estimated fund balance of the non-converter reserve account, excluding the developer's converter obligation, as of the beginning of the period for which the budget will be in effect.

(6) Timely funding. Reserves included in the adopted budget are common expenses and must be fully funded unless properly waived or reduced. Reserves shall be funded in at least the same frequency that assessments are due from the unit owners (e.g., monthly or quarterly).

(7) Restrictions on use. In a multi-condominium association, no vote to allow an association to use reserve funds for purposes other than that for which the funds were originally reserved shall be effective as to a particular condominium unless conducted at a meeting at which the same percentage of voting interests in that condominium that would otherwise be required for a quorum of the association is present in person or by proxy, and a majority of those present in person or by limited proxy, vote to use reserve funds for another purpose. Expenditure of unallocated interest income earned on reserve funds is restricted to any of the capital expenditures, deferred maintenance or other items for which reserve accounts have been established.

(8) Annual vote required to waive reserves. Any vote to waive or reduce reserves for capital expenditures and deferred maintenance required by Section 718.112(2)(f) 2., Florida Statutes, shall be effective for only one annual budget. Additionally, in a multi-condominium association, no waiver or reduction is effective as to a particular condominium unless conducted at a meeting at which the same percentage of voting interests in that condominium that would otherwise be required for a quorum of the association is present, in person or by proxy, and a majority of those present in person or by limited proxy vote to waive or reduce reserves. For multi-condominium associations in which the developer is precluded from casting its votes to waive or reduce the funding of reserves, no waiver or reduction is effective as to a particular condominium unless conducted at a meeting at which the same percentage of non-developer voting interests in that condominium that would otherwise be required for a quorum of the association is present, in person or by proxy, and a majority of those present in person or by limited proxy vote to waive or reduce reserves.